

# Network Infrastructure & Connectivity Solutions

## Our Story

Vericom Global Solutions is a leading provider of network infrastructure and connectivity solutions for enterprise, government, and operator markets. With global headquarters in Knoxville, TN, we provide best-in-class solutions to more than 30 countries worldwide.

We deliver a comprehensive product portfolio designed to meet our customers' network infrastructure needs in an increasingly connected world through our global network of distributors and integrators.

In addition to our innovative design, engineering and manufacturing capabilities, we are the **relationship of choice** for a diverse family of clients worldwide who are confident in our ability to consistently perform to a standard of excellence that is without equal in the industries we serve.

## Delivering Tomorrow's Technology - Today.



Our Customer Support Team is available during our normal business hours:

**Monday-Friday: 8:00am - 8:00pm EST**

**Saturday-Sunday: Closed**

Contact us with any questions or comments you may have regarding our products or services at:

**Phone: 865-671-4455**

**Email: [sales@vericomsolutions.com](mailto:sales@vericomsolutions.com)**



**Corporate Headquarters - 10025 Investment Drive, Suite 120 Knoxville, TN 37932**



## Bulk Structured Cabling

Category Cable	4
Coaxial Cable	5
Fire Alarm Cable	5
Low Voltage Landscape Cable	6
Siamese Cable	6
Security Cable	6
Speaker Cable	7
Thermostat Cable	7

## Cables

Ethernet Cables	8
HDMI Cables	9

## Open Floor Racks

2 Post Aluminum & Steel Relay Racks	10-11
4 Post Fixed Depth Steel Relay Racks	12-13
AV / Security Open Frame Racks	12
4 Post Flexible Depth Server Relay Racks	14-15

## Wall Mount Solutions

Fixed Wall Mount Cabinets	16-17
Hinged Wall Mount Brackets & Cover Plate	17
Double Hinge (Swing Out) Wall Mount Cabinets	18-19
High Density (Swing Out) Wall Mount Cabinets	20-21

## 4-7

## Specialty Cabinets

SOHO / Remote Office Cabinets	22-23
AV Cabinets	24-25

## Data Center Solutions

Server Cabinets	26-27
Network Cabinets	28-29

## Rack & Cabinet Accessories

Airflow Management	30
Cable Management	30
Shelves & Drawers	31
Casters & Levelers	31
Server & Network Cabinet Accessories	32
AV Cabinet & Rack Accessories	33
Power Distribution & Cabinet Lighting	33
Patch Panels	34

## Installation Accessories

Keystone Plates & Inserts	35
Connectors	36
Installation Tools	37
Wire Management	38

## Delivery Options

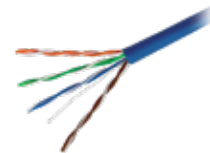
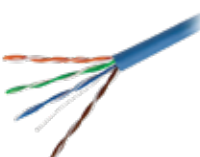
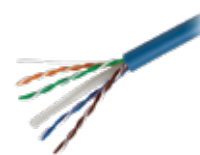
## 39



## Category Cable

## Ordering Information

Category 3 Premise Cable		
Item #	Color	Description
MBW3U-01633	Gray	2P 24 AWG U/UTP SBC, CM Rated, 1,000 ft Pull Box
Category 5e Premise Cable		
Item #	Color	Description
MBW5U-03577	Beige	4P 24 AWG U/UTP SBC, CMR Rated, 1,000 ft Pull Box
MBW5U-01440	Black	
MBW5U-00932	Blue	
MBW5U-01442	Gray	
MBW5U-01555	Green	
MBW5U-03751	Orange	
MBW5U-01554	Red	
MBW5U-01441	White	
MBW5U-01443	Yellow	
MBW5F-00933	Blue	4P 24 AWG F/UTP SBC, CMR Rated, 1,000 ft Pull Box
MBW5U-03576	Gray	4P 24 AWG U/UTP SBC, CMX Indoor/Outdoor Rated, 1,000 ft Pull Box
MBW5U-02400	Blue	4P 24 AWG U/UTP SBC, CMP Rated, 1,000 ft Pull Box
MBW5U-03578	Gray	
MBW5U-02401	White	
MBW5U-03351	Yellow	
MBW5U-04486	Black	4P 24 AWG U/UTP SBC Gel-Filled, Direct Burial CMX Rated, 1,000 ft Spool
Category 6 Premise Cable		
Item #	Color	Description
MBW6U-03667	Black	4P 23 AWG U/UTP SBC, CMR Rated, 1,000 ft Pull Box
MBW6U-00934	Blue	
MBW6U-01623	Gray	
MBW6U-03628	Green	
MBW6U-01444	White	
MBW6U-01445	Yellow	
MBW6F-00935	Blue	4P 23 AWG F/UTP SBC, CMR Rated, 1,000 ft Spool in Box
MBW6U-02402	Blue	4P 23 AWG U/UTP SBC, CMP Rated, 1,000 ft Pull Box
MBW6U-04221	Gray	
MBW6U-02403	White	
MBW6U-03680	Yellow	
MBW6U-03676	Black	4P 23 AWG U/UTP SBC Gel-Filled, Direct Burial CMX Rated, 1,000 ft Wooden Spool
Category 6a Premise Cable		
Item #	Color	Description
MBW6A-04378	Blue	4P 23 AWG U/UTP SBC, CMR Rated, 1,000 ft Wooden Spool
MBW6A-04379	White	

CAT3 2P Unshielded  
CM Premise CableCAT5e 4P Unshielded  
CMR Premise CableCAT5e 4P Shielded  
CMR Premise CableCAT5e 4P Unshielded CMX  
Indoor / Outdoor Premise CableCAT5e 4P Unshielded  
CMP Premise CableCAT5e 4P Unshielded Direct Burial  
Gel-Filled CMX Premise CableCAT6 4P Unshielded  
CMR Premise CableCAT6 4P Shielded  
CMR Premise CableCAT6 4P Unshielded  
CMP Premise CableCAT6 4P Unshielded Direct Burial  
Gel-Filled CMX Premise CableCAT6A 4P Unshielded  
CMR Premise Cable

*Give your install a polished professional finish with Vericom boots and connectors.*

*See page 36 for available options and colors.*

## Coax Cable

RG6 Dual-Shield



RG6 Quad-Shield



## Ordering Information

## Dual Shielded Coaxial Cable

Item #	Color	Description
XRG06-04549 XRG06-04550	Black White	RG6 CCS 18 AWG Dual Shield CM Rated, 1,000 ft R-I-B
XRG06-01503 XRG06-01504	Black White	RG6 CCS 18 AWG Dual Shield 60%, CM Rated 1,000 ft Spool
XRG06-02404 XRG06-02405	Black White	RG6 CCS 18 AWG Dual Shield 60%, CM Rated, 1,000 ft R-I-B
XRG06-04583 XRG06-04584	Black White	RG6 CCS 18 AWG Dual Shield 60%, CM Rated, 1,000 ft Pull Box
XRG06-04798	Black	RG6 CCS 18 AWG Dual Shield 60%, CMR Rated, 1,000 ft R-I-B
XRG6P-03617	White	RG6 CCS 18 AWG Dual Shield 60%, CMP Rated, 1,000 ft Wooden Spool

## Quad Shielded Coaxial Cable

Item #	Color	Description
XRG06-01509 XRG06-01510	Black White	RG6 18 AWG CCS Quad Shield, CM Rated, 1,000 ft Wooden Spool
XRG06-02406 XRG06-02407	Black White	RG6 18 AWG CCS Quad Shield, CM Rated, 1,000 ft R-I-B
XRG6P-04832	White	RG6 18 AWG CCS Quad Shield, CMP Rated, 1,000 ft Wooden Spool

2 Conductor Fire Alarm Cable



4 Conductor Fire Alarm Cable



## Fire Alarm Cable

## Ordering Information

## 2 Conductor Fire Alarm Cable

Item #	AWG	Description
SF182-01945	18	2 SBC 18 AWG Unshielded, FPLR/CL3R/CMR Rated, 1,000 ft Pull Box, Color Code: Black, Red
SF162-01951	16	2 SBC 16 AWG Unshielded, FPLR/CL3R/CMR Rated, 1,000 ft Pull Box, Color Code: Black, Red
SF142-01957	14	2 SBC 14 AWG Unshielded, FPLR/CL3R/CMR Rated, 1,000 ft Spool, Color Code: Black, Red

## 4 Conductor Fire Alarm Cable

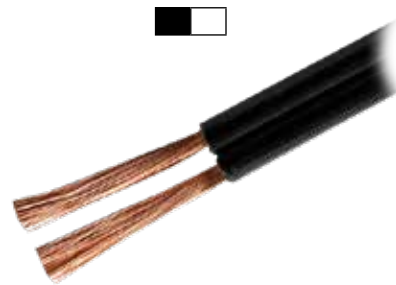
Item #	Color	Description
SF184-01948	18	4 SBC 18 AWG Unshielded, FPLR/CL3R/CMR Rated, 1,000 ft Pull Box, Color Code: Black, Red, Brown, Blue
SF164-01954	16	4 SBC 16 AWG Unshielded, FPLR/CL3R/CMR Rated, 1,000 ft Pull Box, Color Code: Black, Red, Brown, Blue

## Low Voltage Landscape Cable

### Ordering Information

2 Conductor Low Voltage Landscape Cable		
Item #	AWG	Description
LW122-04421	12	12 AWG 2C Unshielded Stranded BC, UV Rated Direct Burial, 500 ft. Spool
LW102-04422	10	10 AWG 2C Unshielded Stranded BC, UV Rated Direct Burial, 500 ft. Spool

2 Conductor Low Voltage Landscape Cable

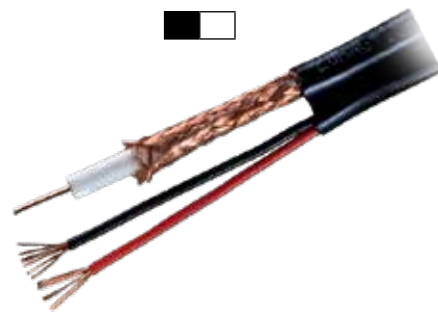


## Siamese Cable

### Ordering Information

RG-59 Siamese Coax With 18/2 Power Cable		
Item #	Color	Description
BCS59-01981	Black	20 AWG CCS RG59 w/ 18/2 SBC Power Wire Siamese, CL2 Rated, 500 ft R-I-B
BCS59-01987	White	

RG-59 Siamese Coax With 18/2 Power Cable



## Security Cable

### Ordering Information

18 AWG Security Cable		
Item #	Type	Description
SA182-01936	18 / 2 Stranded	18 AWG 2C Unshielded Stranded BC, CMR/CL3R Rated, 1,000 ft Pull Box, Color: Gray
SA184-01939	18 / 4 Stranded	18 AWG 4C Unshielded Stranded BC, CMR/CL3R Rated, 1,000 ft Pull Box, Color: Gray
22 AWG Security Cable		
Item #	Type	Description
SA222-01927	22 / 2 Stranded	22 AWG 2C Unshielded Stranded BC, CMR/CL3R Rated, 1,000 ft Pull Box, Color: Gray
SA224-03349	22 / 4 Stranded	22 AWG 4C Unshielded Stranded BC, CMR/CL3R Rated, 1,000 ft Pull Box, Color: Gray
SA226-01933	22 / 6 Stranded	22 AWG 6C Shielded Stranded BC, CMR/CL3R Rated, 1,000 ft Pull Box, Color: Gray
SA222-03345	22 / 2 Solid	22 AWG 2C Unshielded Solid BC, CMR/CL3R Rated, 1,000 ft Pull Box, Color: Gray
SA224-01929	22 / 2 Solid	22 AWG 4C Unshielded Solid BC, CMR/CL3R Rated, 1,000 ft Pull Box, Color: Gray

2 Conductor Unshielded Stranded Security Cable



4 Conductor Unshielded Stranded Security Cable



2 Conductor Unshielded Solid Security Cable



4 Conductor Unshielded Solid Security Cable



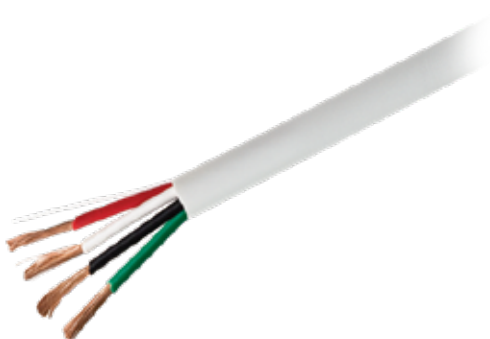
6 Conductor Shielded Stranded Security Cable



## 2 Conductor Stranded OFC Speaker Cable



## 4 Conductor Stranded OFC Speaker Cable



## Speaker Cable

## Ordering Information

## 2 Conductor Stranded OFC Speaker Cable

Item #	AWG	Description
AW162-01988	16	16 AWG 2C Unshielded Stranded OFC, CM/CL3 Rated, 500 ft Pull Box, Color Code: Black, Red
AW142-01990	14	14 AWG 2C Unshielded Stranded OFC, CM/CL3 Rated, 500 ft Pull Box, Color Code: Black, Red

## 4 Conductor Stranded OFC Speaker Cable

Item #	Color	Description
AW164-01989	16	16 AWG 4C Unshielded Stranded OFC, CM/CL3 Rated, 500 ft Pull Box, Color Code: Black, Green, Red, White
AW144-03681	14	14 AWG 4C Unshielded Stranded OFC, CM/CL3 Rated, 500 ft Pull Box, Color Code: Black, Green, Red, White

## 2 Conductor Thermostat Cable



## 3 Conductor Thermostat Cable



## 4 Conductor Thermostat Cable



## 5 Conductor Thermostat Cable



## 6 Conductor Thermostat Cable



## 7 Conductor Thermostat Cable



## 8 Conductor Thermostat Cable



## 10 Conductor Thermostat Cable



## Thermostat Cable

## Ordering Information

## CL2R Rated Thermostat Cable

Item #	AWG / Color	Description
HT202-02556 HT182-02545	20 AWG / Brown 18 AWG / White	2C Unshielded Solid, CL2R Rated, 500 ft. Spool, Color Code: Red, White
HT183-02546	18 AWG / White	3C Unshielded Solid, CL2R Rated, 500 ft. Spool, Color Code: Green, Red, White
HT204-02558 HT184-02547	20 AWG / Brown 18 AWG / White	4C Unshielded Solid, CL2R Rated, 500 ft. Spool, Color Code: Blue, Green, Red, White
HT205-02559	20 AWG / Brown	5C Unshielded Solid, CL2R Rated, 500 ft. Spool, Color Code: Blue, Green, Red, White, Yellow
HT185-02548	18 AWG / White	5C Unshielded Solid, CL2R Rated, 250 ft. Spool, Color Code: Blue, Green, Red, White, Yellow
HT186-02549	18 AWG / White	6C Unshielded Solid, CL2R Rated, 250 ft. Spool, Color Code: Blu, Brn, Grn, Rd, Wt, Ylw
HT207-02561	20 AWG / Brown	7C Unshielded Solid, CL2R Rated, 250 ft. Spool, Color Code: Blu, Brn, Grn, Or, Rd, Wt, Ylw
HT208-02562 HT188-02551	20 AWG / Brown 18 AWG / White	8C Unshielded Solid, CL2R Rated, 500 ft. Spool, Color Code: Blk, Blu, Brn, Grn, Or, Rd, Wt, Ylw
HT810-02553	18 AWG / White	10C Unshielded Solid, CL2R Rated, 250 ft. Spool, Color Code: Blk, Blu, Brn, Grn, Gry, Or, Pnk, Rd, Wt, Ylw

## Ethernet Cables

### Ordering Information

CAT5e U/UTP Non-Booted - Blue							CM Rated
1 ft.	3 ft.	6 ft.	10 ft.	15 ft.	25 ft.	50 ft.	100 ft.
XPC5U-03734	XPC5U-03736	XPC5U-03739	XPC5U-03741	XPC5U-03742	XPC5U-03744	XPC5U-03745	XPC5U-03747
CAT5e U/UTP Snagless							CM Rated
Length	Black	Blue	Gray	White	Yellow		
1 ft.	XPC5U-00102	XPC5U-00135	XPC5U-00113	XPC5U-00124	XPC5U-00168		
2 ft.	XPC5U-00103	XPC5U-00136	XPC5U-00114	XPC5U-00125	XPC5U-00169		
3 ft.	XPC5U-00104	XPC5U-00137	XPC5U-00115	XPC5U-00126	XPC5U-00170		
4 ft.	XPC5U-02571	XPC5U-02581	XPC5U-02591	XPC5U-02641	XPC5U-02651		
5 ft.	XPC5U-02572	XPC5U-02582	XPC5U-02592	XPC5U-02642	XPC5U-02652		
6 ft.	XPC5U-00105	XPC5U-00138	XPC5U-01431	XPC5U-00127	XPC5U-00171		
7 ft.	XPC5U-02573	XPC5U-02583	XPC5U-02593	XPC5U-02643	XPC5U-02653		
10 ft.	XPC5U-02574	XPC5U-02584	XPC5U-02594	XPC5U-02644	XPC5U-02654		
15 ft.	XPC5U-00108	XPC5U-00141	XPC5U-00119	XPC5U-00130	XPC5U-00174		
25 ft.	XPC5U-00109	XPC5U-00142	XPC5U-00120	XPC5U-00131	XPC5U-00175		
50 ft.	XPC5U-00111	XPC5U-00144	XPC5U-00122	XPC5U-00133	XPC5U-00177		
75 ft.	XPC5U-02576	XPC5U-02586	XPC5U-02596	XPC5U-02646	XPC5U-02656		
100 ft.	XPC5U-00112	XPC5U-00145	XPC5U-00123	XPC5U-00134	XPC5U-00178		
CAT5e F/UTP Snagless							CM Rated
Length	Black	Blue	Gray	White	Yellow		
1 ft.	XPC5F-00190	XPC5F-00223	XPC5F-00201	XPC5F-00212	XPC5F-02812		
2 ft.	XPC5F-00191	XPC5F-00224	XPC5F-00202	XPC5F-00213	XPC5F-02813		
3 ft.	XPC5F-00192	XPC5F-00225	XPC5F-00203	XPC5F-00214	XPC5F-02814		
5 ft.	XPC5F-02709	XPC5F-02718	XPC5F-02727	XPC5F-02804	XPC5F-02816		
CAT6 U/UTP Snagless							CM Rated
Length	Black	Blue	Gray	White	Yellow		
1 ft.	XPC6U-00234	XPC6U-00267	XPC6U-00245	XPC6U-00256	XPC6U-02901		
2 ft.	XPC6U-00235	XPC6U-00268	XPC6U-00246	XPC6U-00257	XPC6U-02903		
3 ft.	XPC6U-00236	XPC6U-00269	XPC6U-00247	XPC6U-00258	XPC6U-02904		
4 ft.	XPC6U-02669	XPC6U-02679	XPC6U-02689	XPC6U-02699	XPC6U-02905		
5 ft.	XPC6U-02670	XPC6U-02680	XPC6U-02690	XPC6U-02700	XPC6U-02906		
6 ft.	XPC6U-00237	XPC6U-00270	XPC6U-00248	XPC6U-00259	XPC6U-02907		
7 ft.	XPC6U-02671	XPC6U-02681	XPC6U-02691	XPC6U-02701	XPC6U-02908		
10 ft.	XPC6U-02672	XPC6U-02682	XPC6U-02692	XPC6U-02702	XPC6U-02909		
15 ft.	XPC6U-00240	XPC6U-00273	XPC6U-00251	XPC6U-00262	XPC6U-02910		
25 ft.	XPC6U-00241	XPC6U-00274	XPC6U-00252	XPC6U-00263	XPC6U-02912		
50 ft.	XPC6U-00243	XPC6U-00276	XPC6U-00254	XPC6U-00265	XPC6U-02913		
75 ft.	XPC6U-02675	XPC6U-02685	XPC6U-02695	XPC6U-02705	XPC6U-02914		
100 ft.	XPC6U-00244	XPC6U-00277	XPC6U-00255	XPC6U-00266	XPC6U-02915		
CAT6 F/UTP Snagless							CM Rated
Length	Black	Blue	Gray	White	Yellow		
1 ft.	XPC6F-00278	XPC6F-00311	XPC6F-00289	XPC6F-00300	XPC6F-03329		
2 ft.	XPC6F-00279	XPC6F-00312	XPC6F-00290	XPC6F-00301	XPC6F-03330		
3 ft.	XPC6F-00280	XPC6F-00313	XPC6F-00291	XPC6F-00302	XPC6F-03331		
5 ft.	XPC6F-03226	XPC6F-03235	XPC6F-03243	XPC6F-03321	XPC6F-03333		
CAT6a Mini U/UTP Snagless							CM Rated
Length	Black	Blue	Gray	White	Yellow		
1 ft.	XPC6A-05472	XPC6A-05502	XPC6A-05482	XPC6A-05462	XPC6A-05492		
2 ft.	XPC6A-05473	XPC6A-05503	XPC6A-05483	XPC6A-05463	XPC6A-05493		
3 ft.	XPC6A-05474	XPC6A-05504	XPC6A-05484	XPC6A-05464	XPC6A-05494		
4 ft.	XPC6A-05475	XPC6A-05505	XPC6A-05485	XPC6A-05465	XPC6A-05495		
5 ft.	XPC6A-05476	XPC6A-05506	XPC6A-05486	XPC6A-05466	XPC6A-05496		
6 ft.	XPC6A-05477	XPC6A-05507	XPC6A-05487	XPC6A-05467	XPC6A-05497		
7 ft.	XPC6A-05478	XPC6A-05508	XPC6A-05488	XPC6A-05468	XPC6A-05498		
10 ft.	XPC6A-05479	XPC6A-05509	XPC6A-05489	XPC6A-05469	XPC6A-05499		
12 ft.	XPC6A-05480	XPC6A-05510	XPC6A-05490	XPC6A-05470	XPC6A-05500		
15 ft.	XPC6A-05481	XPC6A-05511	XPC6A-05491	XPC6A-05471	XPC6A-05501		

CAT5e Unshielded  
Non-Booted Patch Cords



CAT5e & CAT6 Unshielded  
Snagless Patch Cords



CAT5e & CAT6 Shielded  
Snagless Patch Cords



Mini CAT6a Unshielded  
Patch Cords



\* Not all available items listed are pictured. For more information contact your Vericom Representative.



## HDMI Cables

High Speed **VS** Series HDMI Cable



High Speed **VB** Series HDMI Cable



High Speed **VP** Series HDMI Cable With Ethernet



High Speed **VU** Series HDMI Cable: Black



High Speed **VU** Series HDMI Cable: White



### Ordering Information

VS Series HDMI Cables					
Item #	Length	4K	Ethernet	3D	1080p
XHD06-04460	6 ft.	X		X	X
XHD06-04461	10 ft.				
VB Series HDMI Cables					
Item #	Length	4K	Ethernet	3D	1080p
AHD06-02535	6 ft.	X		X	X
AHD10-03058	10 ft.				
AHD12-02536	12 ft.				
**VP Series HDMI Cables- Premium Certified					
Item #	Length	4K	Ethernet	3D	1080p
AHD06-04736	6 ft.	X		X	X
AHD10-04737	10 ft.				
VP Series HDMI Cables with Ethernet					
Item #	Length	4K	Ethernet	3D	1080p
AHD03-04288	3 ft.				
AHD06-04289	6 ft.				
AHD10-04290	10 ft.				
AHD12-04291	12 ft.	X	X	X	X
AHD15-04292	15 ft.				
AHD30-04293	30 ft.				
AHD50-04294	50 ft.				
VU Series HDMI Cables: Black					
Item #	Length	4K	Ethernet	3D	1080p
XHD01-04251	1.5 ft.				
XHD03-04252	3 ft.				
XHD06-04253	6 ft.	X	X	X	X
XHD10-04254	10 ft.				
XHD12-04255	12 ft.				
VU Series HDMI Cables: White					
Item #	Length	4K	Ethernet	3D	1080p
XHD01-04256	1.5 ft.				
XHD03-04257	3 ft.				
XHD06-04258	6 ft.	X	X	X	X
XHD10-04259	10 ft.				
XHD12-04260	12 ft.				

\*\* Item Not Pictured.

We have select HDMI cables that are offered at discontinued rates, giving customers an opportunity to get top-quality HDMI cable at clearance prices.

Visit our website or ask your representative for more details on these great deals.

2 Post Aluminum & Steel Relay Racks

Vericom® 2 Post Relay Racks are designed to work in a variety of rack system environments where a strong, stable, and durable relay rack is desired. With a small footprint that saves floor space, our 2 Post Relay Racks provide unrestricted airflow for maximum ventilation and easy access to cables for moves, adds, and changes.

Our racks are offered in either high grade aluminum or steel and support up to 1,000 lbs. of standard 19 Inch EIA equipment. Aluminum racks include 10-32 tapped holes on both sides, while steel racks offer the added flexibility of 10-32 tapped holes on one side and cage holes on the other side. Both include printed RU markings and are available in three heights.



Top plate provides additional stability

Base plate is pre-drilled for floor mounting

RU markings and threaded holes simplify equipment installation

### Specifications

Equipment Support	1.75" RU Spacing, Marked and Numbered on Rails
	19" W, EIA-310-D Universal Hole Spacing
	10-32 Threaded Holes, (10-32 Cage Holes - Steel Only)
Material	Varies By Item Number (See Ordering Information Chart)
Finish	Black Powder Coat
Static Loading Capacity	1,000 lbs.
Included Accessories	(48) 10-32 Mounting Screws & Washers (1) Assembly Instructions
Compliance	ANSI/EIA RS-310D
	IEC60297-2
	DIN41494; Part 1
	DIN41494; Part 7

## 2 Post Aluminum & Steel Relay Racks

### Benefits

#### Flexibility

- Open design provides exceptional airflow and fast / easy access to equipment
- Available in three sizes to fit individual needs

#### Key Features

- 1,000 lbs. load capacity
- Durable 4mm aluminum or steel construction
- RU markings on rails simplify equipment installation
- Base plates are pre-drilled for mounting to floor
- Small footprint
- Flat packed and easy to assemble

### Ordering Information

42U	Item Number	Product Material
	RR2PS42	Steel
	RR2PA42	Aluminum

42U Dimensions: 78.62" x 20.25" x 15.00"

45U	Item Number	Product Material
	RR2PS45	Steel
	RR2PA45	Aluminum

45U Dimensions: 83.87" x 20.25" x 15.00"

48U	Item Number	Product Material
	RR2PS48	Steel
	RR2PA48	Aluminum

48U Dimensions: 89.15" x 20.25" x 15.00"

### Optional Accessories

Double Sided Center Mount Shelf, 2U



RASDS02

Horizontal Finger Duct Cable Manager (Steel), 1U



RAMSFD1

Vertical Finger Duct Cable Manager, 45U



RAMVF45

Horizontal D-Ring Cable Manager (5 Rings, Plastic), 1U



RAMP5D1

Steel Ring Cable Manager, 1U



RAMSRG1

Additional accessories available. For a complete list, visit [vericomsolutions.com](http://vericomsolutions.com)

## 4 Post Fixed Depth Steel Relay Racks

Vericom® 4 Post Fixed Depth Racks are a great solution for a variety of installation environments:

- Floor mounting - base is pre-drilled for floor mounting.
- Uneven Surfaces - Includes 4 leveling feet for uneven surfaces.
- Mobility - compatible with locking and free-wheeling casters when mobility is required.

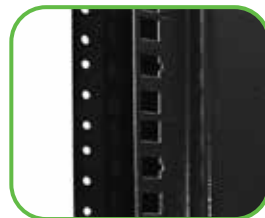
Constructed of cold rolled and powder-coated 14 gauge steel, these racks include both threaded and cage hole profiles, have a maximum load capacity of 550 lbs, and are available in 42U, 45U, and 48U configurations. Ships unassembled and flat packed for easy on-site handling.

### Specifications

Equipment Support	19" W, EIA-310-D Universal Hole Spacing
	10-32 Threaded Holes and Cage Holes
Material	14 Gauge Cold Rolled Steel
Finish	Black Powder Coat
Static Loading Capacity	550 lbs.
Included Accessories	(48) 10-32 Mounting Screws & Washers (48) 10-32 Cage Nuts (4) Adjustable Levelers (1) Assembly Instructions
Compliance	ANSI/EIA RS-310D
	IEC60297-2
	DIN41494; Part 1
	DIN41494; Part 7



Brackets and screws make for a quick and easy assembly



Cage and threaded holes for maximum equipment compatibility



Adjustable levelers accommodate installation on uneven surfaces



*Searching for the perfect solution to your AV / Security needs?*

*Our new AV / Security open frame racks are perfect for supporting AV and security equipment in a commercial or residential setting. These versatile racks are sized to stand alone or can be placed in a cabinet for added security.*

*We offer these racks in two sizes: 15U and 20U.*

Item Number	Rack Units
RAVRK15	15U
RAVRK20	20U

*Ask your Vericom sales representative for more information.*





## 4 Post Fixed Depth Steel Relay Racks

### Benefits

#### Flexibility

- Open design provides exceptional airflow and fast / easy access to equipment
- 4 adjustable levelers included to accommodate installation on uneven surfaces
- Available in three heights to fit individual needs

#### Key Features

- 550 lbs. load capacity
- Durable 14 gauge steel construction
- Base plates are pre-drilled for mounting to floor
- Small footprint
- Flat packed and easy to assemble

### Ordering Information

42U	Item Number	Base Depth	Rail Depth
	RR4PS42	23.62"	15.63"

42U Dimensions: 78.75" x 23.62" (HxW)

45U	Item Number	Base Depth	Rail Depth
	RR4PS45	23.62"	15.63"

45U Dimensions: 83.87" x 23.62" (HxW)

48U	Item Number	Base Depth	Rail Depth
	RR4PS48	23.62"	15.63"

48U Dimensions: 87.50" x 23.62" (HxW)

### Optional Accessories

12" Cantilever Shelf, 2U



RASC122

Horizontal Finger Duct Cable Manager (Plastic), 2U



RAMPFD2

Vertical Trough Cable Manager, 45U



RAMVT45

Horizontal D-Ring Cable Manager (4 Rings, Steel), 1U



RAMS4D1

Steel Ring Cable Manager, 1U



RAMSRG1

Additional accessories available. For a complete list, visit [vericomsolutions.com](http://vericomsolutions.com)

## 4 Post Flexible Depth Server Racks

Vericom® 4 Post Flexible Depth Server Racks provide a level of flexibility that most standard 4 post racks simply don't offer. The adjustable-length cross bars can be set to a depth of 24"-36" to match the size of your equipment, making this rack a great solution for storing a variety of IT and communications equipment. The open design provides unobstructed airflow to keep equipment running cool, as well as fast and easy access to equipment when maintenance is required.

Constructed of cold rolled and black powder coated steel, these racks support up to 1,000 lbs. and feature printed RU numbers and depth indicators to make set-up and installation easy.



### Specifications

Equipment Support	Two Pairs of Mounting Rails
	Adjustable Depth (24" - 36")
	1.75" RU Spacing, Marked and Numbered on Rails
	19" W, EIA-310-D Universal Hole Spacing
Finish	Black Powder Coat
Static Loading Capacity	1,000 lbs.
Included Accessories	(48) 10-32 Mounting Screws
	(48) 10-32 Cage Nuts
Compliance	ANSI/EIA RS-310D
	IEC60297-2
	DIN41494; Part 1
	DIN41494; Part 7



## 4 Post Flexible Depth Server Racks

### Benefits

#### Flexibility

- Adjustable depth provides greater flexibility to match a variety of equipment sizes
- Open design provides exceptional airflow and fast/easy access to equipment
- Available in three heights to fit individual needs

#### Key Features

- 1,000 lbs. load capacity
- Depth is field-adjustable from 24" up to 36" and is marked on cross bars
- Cage nut rails with printed RU markings
- Base plates are pre-drilled for mounting on floor
- Flat packed and easy to assemble

### Ordering Information

42U	Item Number	Min. Depth	Max. Depth
	R4PAD42	33.50"	42.50"

42U Dimensions: 79.13" x 21.25" (HxW)

45U	Item Number	Min. Depth	Max. Depth
	R4PAD45	33.50"	42.50"

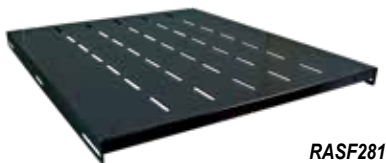
45U Dimensions: 84.38" x 21.25" (HxW)

48U	Item Number	Min. Depth	Max. Depth
	R4PAD48	33.50"	42.50"

48U Dimensions: 89.63" x 21.25" (HxW)

### Optional Accessories

28.5" Fixed Shelf, 1U



RAS281

Horizontal Finger Duct Cable Manager (Plastic), 1U



RAMPFD1

Vertical Trough Cable Manager (Set of 2), 18U Per



RAMVT18

Horizontal D-Ring Cable Manager (5 Rings, Plastic), 1U



RAMP5D1

Steel Ring Cable Manager, 1U



RAMSRG1

Additional accessories available. For a complete list, visit [vericomsolutions.com](http://vericomsolutions.com)

## Fixed Wall Mount Cabinets

Vericom® Fixed Wall Mount Cabinets are a perfect solution for a variety of networking, AV, and security installations. Compatible with all standard 19-inch EIA equipment, these cabinets are packed with features that make setting up and maintaining equipment a breeze, including a lockable, removable, and reversible front door, removable side panels, and a removable 12" x 12" rear panel for in-wall cable entry.

Constructed of cold rolled and powder-coated 19 gauge steel, these fixed wall mount cabinets have a maximum load capacity of 132 lbs and are available in 9U, 12U, and 15U configurations. Ships unassembled and flat packed for easy on-site handling.



### Specifications

Front Door	Removable, Reversible & Lockable Steel Frame with Full Panel Acrylic Window, Opens Full 180°
Back Panel	12" x 12" Removable Panel Wall Mounting Keyholes Spaced 16" Apart Multiple Latch Points
Side Panels	Solid, Full Height & Removable Ventilation Holes for Optional Fans
Top Panel	(6) Knock-Out Cable Entry Holes Located at Back: (2) ¾", (2) 1" and (2) 2" Knockouts
Bottom Panel	Ventilation Holes for Optional Fans (6) Knock-Out Cable Entry Holes Located at Back: (2) ¾", (2) 1" and (2) 2" Knockouts
Equipment Support	Adjustable Rail Depth (3.25") 1.75" RU Spacing, Marked and Numbered on Rails 19" W, EIA-310-D Universal Hole Spacing 10-32 Threaded Holes
Grounding	14 AWG Ground Wire Connects Door and Side Panels to Cabinet Frame
Finish	Black Powder Coat
Static Loading Capacity	132 lbs.
Included Accessories	(48) 10-32 Mounting Screws & Washers (3) Grounding Kits (1) Paper Mounting Template (2) Keys
Compliance	ANSI/EIA RS-310D IEC60297-2 DIN41494; Part 1 DIN41494; Part 7





## Fixed Wall Mount Cabinets

### Benefits

#### Security & Protection

- Locking door and side panels prevent unauthorized access to equipment
- Door and side panels are grounded to the cabinet frame

#### Flexibility

- Multiple cable entry options provide greater flexibility during installation
- Mounting rails are adjustable to match a variety of equipment sizes
- Front door and side panels are removable for convenient access to equipment

#### Multi-Use

- Available in three sizes to fit in a variety of environments where space is limited
- Top and bottom panel vents to optimize cooling of equipment
- Adaptable for use in network, security and audio/video installations

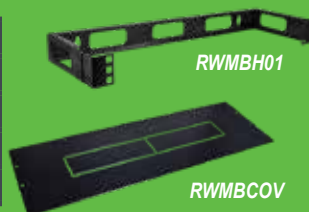
#### Key Features

- Cable entry on top, bottom and back
- Lace points to reduce cable clutter
- Lockable acrylic front door is removable and reversible
- Removable back panel and side panels

*Searching for a space savvy, cost-effective solution for mounting a patch panel to a wall?*

*Our Hinged Wall Mount Brackets are available in 3 sizes to fit your specific needs. Cover plate sold separately.*

Item Number	Description
RWMBH01	1U Bracket
RWMBH02	2U Bracket
RWMBH04	4U Bracket
RWMBCOV	Cover Plate



### Ordering Information

9U	Item Number	Max. Usable Depth
	RWCSF09	22.25"

9U Dimensions: 18.11" x 21.25" x 23.62"

12U	Item Number	Max. Usable Depth
	RWCSF12	22.25"

12U Dimensions: 23.43" x 21.25" x 23.62"

15U	Item Number	Max. Usable Depth
	RWCSF15	22.25"

15U Dimensions: 28.54" x 21.25" x 23.62"

### Optional Accessories

Horizontal D-Ring  
Cable Manager  
(4 Rings, Steel), 1U



RAMS4D1

Horizontal Finger Duct  
Cable Manager (Plastic), 1U



RAMPFD1

12" Cantilever Shelf, 2U



RASC122

Adjustable Depth  
Wall Cabinet Shelf, 1U



RASA231

Double Fan, 150 CFM



RAFND02

Rubber Grommet Kit for  
Fixed or Double Hinge Wall  
Mount Cabinets

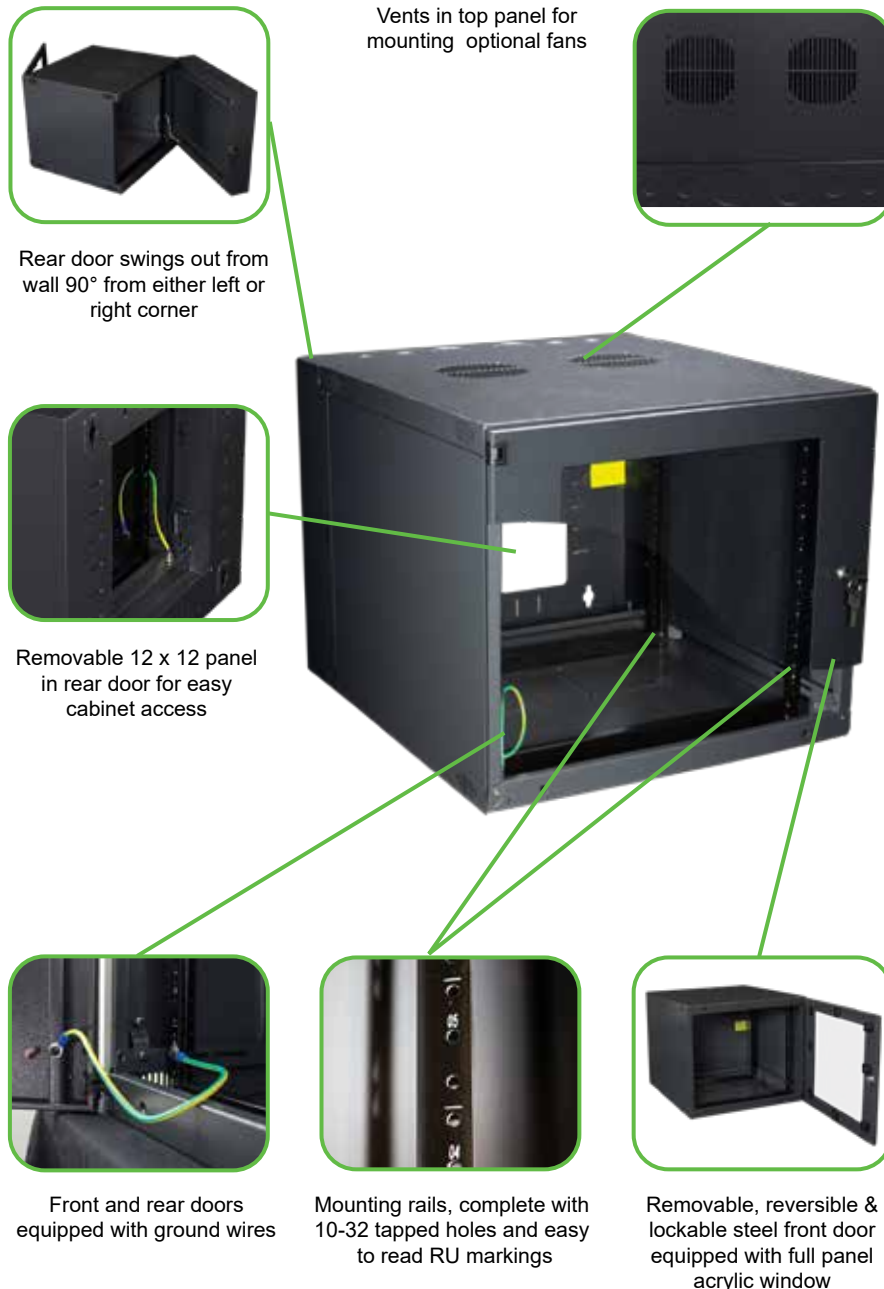


RARGKWC

## Double Hinge (Swing Out) Wall Mount Cabinets

Vericom® Double Hinge Swing Out Wall Mount Cabinets are a great solution for networking, security, and AV installations where access to the back of the equipment is important. Compatible with all standard 19-inch EIA equipment, these cabinets feature a swing-out design that also allows the rear section to completely disconnect from the cabinet, making installation a breeze.

Constructed of cold rolled, powder-coated 19 gauge steel, these swing out wall mount cabinets have a maximum load capacity of 100 lbs and are available in 9U, 12U, and 15U racking heights. Ships unassembled and flat packed for easy on-site handling.



### Specifications

Front Door	Removable, Reversible & Lockable Steel Frame with Full Panel Acrylic Window, Opens Full 180°
Back Panel	Swings Out From Wall 90° From Either Left or Right Corner
	12" x 12" Removable Panel
	Wall Mounting Keyholes Spaces 16" Apart
	Multiple Lace Points
Side Panels	Solid, Built into Frame
Top Panel	Ventilation Holes for Optional Fan
	(6) Knock-Out Cable Entry Holes Located at Back: (2) ¾", (2) 1" and (2) 2" Knockouts
Bottom Panel	Ventilation Holes for Optional Fan
	(6) Knock-Out Cable Entry Holes Located at Back: (2) ¾", (2) 1" and (2) 2" Knockouts
Equipment Support	Two Pairs of Mounting Rails
	Adjustable Rail Depth (3" Range)
	1.75" RU Spacing, Marked and Numbered on Rails
	19" W, EIA-310-D Universal Hole Spacing
	10-32 Threaded Holes
Grounding	14 AWG Ground Wire Connects Door to Cabinet Frame
Finish	Black Powder Coat
Static Loading Capacity	100 lbs.
Included Accessories	(48) 10-32 Mounting Screws & Washers
	(2) Grounding Kit (1) Paper Mounting Template (2) Keys
Compliance	ANSI/EIA RS-310D IEC60297-2 DIN41494; Part 1 DIN41494; Part 7



## Double Hinge (Swing Out) Wall Mount Cabinets

### Benefits

#### Security & Protection

- Locking front and rear doors prevent unauthorized access to equipment
- Two sets of rails provide a stable mounting structure
- Door are grounded to the cabinet frame

#### Flexibility

- Multiple cable entry options provide greater flexibility during installation
- Mounting rails are adjustable to match a variety of equipment sizes
- Doors are removable for convenient access to equipment

#### Multi-Use

- Available in three sizes to fit in a variety of environments where space is limited
- Top and bottom panel vents to optimize cooling of equipment
- Adaptable for use in network, security and audio/video installations

#### Key Features

- Cable entry on top, bottom and back
- Lace points to reduce cable clutter
- Lockable acrylic front door is removable and reversible
- Lockable rear door swings out 90° from wall for accessibility

### Ordering Information

9U	Item Number	Max. Usable Depth
	RWCDH09	20.5"

9U Dimensions: 18.11" x 21.25" x 23.62"

12U	Item Number	Max. Usable Depth
	RWCDH12	20.5"

12U Dimensions: 23.43" x 21.25" x 23.62"

15U	Item Number	Max. Usable Depth
	RWCDH15	20.5"

15U Dimensions: 28.54" x 21.25" x 23.62"

### Optional Accessories

Horizontal D-Ring  
Cable Manager  
(5 Rings, Plastic), 1U



RAMP5D1

Horizontal Finger Duct  
Cable Manager  
(Steel), 1U



RAMSFD1

12" Cantilever Shelf, 2U



RASC122

Adjustable Depth  
Wall Cabinet Shelf, 1U



RASA231

Double Fan, 150 CFM



RAFND02

Rubber Grommet Kit for  
Fixed or Double Hinge Wall  
Mount Cabinets



RARGKWC

## High Density (Swing Out) Wall Mount Cabinets

Vericom® High Density Swing Out Wall Mount Cabinets are built for heavy-duty, large-scale applications. A perfect choice for networking projects requiring larger load capacities, the Vericom High Density Swing Out Wall Mount Cabinet is a fully welded frame of 14 gauge cold rolled steel that supports up to 250 lbs of networking equipment. It features a 90-degree swing-out hinge for easy access to cables and connections, heavy duty hinges and latches and six knock-outs in the top and bottom of the rear section for cable management flexibility. Ships fully assembled and ready to be installed.



Lockable rear door equipped with spring latches and keyed lock for added security



Rear door swings out from wall 90° and disconnects from cabinet for easy mounting



Heavy-duty hinge design allows for weight capacity up to 250 lbs.



Removable, reversible & lockable steel front door equipped with full panel acrylic window



Mounting rails, complete with 12-24 tapped holes and easy to read RU markings



Front and rear doors equipped with ground wires

### Specifications

Front Door	Removable, Reversible & Lockable Steel Frame with Full Panel Acrylic Window, Opens Full 180°
Back Panel	Swings Out From Wall 90°
	Heavy-duty Hinges
	8.5" x 15" Knockout Panel
	Wall Mounting Keyholes Spaced 16" Apart
	Multiple Lace Points
Side Panels	Full Height, Removable and Lockable
Top Panel	5.25" x 17" Removable Panel for Optional Fans
	(6) Knock-Out Cable Entry Holes Located at Back: (4) 3" and (2) 1" Knockouts
Bottom Panel	(6) Knock-Out Cable Entry Holes Located at Back: (4) 3" and (2) 1" Knockouts
Equipment Support	(2) 12 Gauge Mounting Rails
	1.75" RU Spacing, Marked and Numbered on Rails
	19" W, EIA-310-D Universal Hole Spacing
	12-24 Tapped Holes
Grounding	14 AWG Ground Wire Connects Doors and Side Panels to Cabinet Frame
Finish	Black Powder Coat
Static Loading Capacity	250 lbs.
Included Accessories	(48) 12-24 Mounting Screws & Washers
	(4) Grounding Kits
	(1) Paper Mounting Template
	(2) Keys
Compliance	ANSI/EIA RS-310D IEC60297-2 DIN41494; Part 1 DIN41494; Part 7





## High Density (Swing Out) Wall Mount Cabinets

### Benefits

#### Security & Protection

- Locking doors and side panels prevent unauthorized access to equipment
- 12 gauge rails provide a stable mounting structure
- Door are grounded to the cabinet frame

#### Flexibility

- Multiple cable entry options provide greater flexibility during installation
- Doors and side panels are removable for convenient access to equipment
- Second pair of rails can be added for high density applications

#### Multi-Use

- Available in four sizes to fit in a variety of environments where space is limited
- Adaptable for use in network, security and audio/video installations

#### Key Features

- Rear hinge allows main section to swing out 90° and disconnects from cabinet for easy mounting
- Lace points to reduce cable clutter
- Lockable acrylic front door is removable and reversible
- 12 gauge steel mounting rails with 12-24 tapped holes & RU markings for easy equipment installation
- Heavy-duty design allows for weight capacity of 250 lbs.

Also Available:

Rubber Grommet Kit  
for High Density  
Wall Cabinets



### Ordering Information

12U	Item Number	Max. Rail Depth
	RWCHW12	20.00"

12U Dimensions: 23.69" x 23.69" x 23.50"

12U Related Optional Accessories	
Item Number	Description
*RAVFNT2	Top Mount Double Fan, 150 CFM
RADVS12	Vented Steel Door, 12U
RADSS12	Solid Steel Door, 12U
RARWC12	Cage Hole Rails (Set of 2), 12U
RARWT12	12-24 Tapped Rails (Set of 2), 12U

15U	Item Number	Max. Rail Depth
	RWCHW15	20.00"

15U Dimensions: 28.94" x 23.69" x 23.50"

15U Related Optional Accessories	
Item Number	Description
*RAVFNT2	Top Mount Double Fan, 150 CFM
RADVS15	Vented Steel Door, 15U
RADSS15	Solid Steel Door, 15U
RARWC15	Cage Hole Rails (Set of 2), 15U
RARWT15	12-24 Tapped Rails (Set of 2), 15U

18U	Item Number	Max. Rail Depth
	RWCHW18	20.00"

18U Dimensions: 34.19" x 23.69" x 23.50"

18U Related Optional Accessories	
Item Number	Description
*RAVFNT2	Top Mount Double Fan, 150 CFM
RADVS18	Vented Steel Door, 18U
RADSS18	Solid Steel Door, 18U
RARWC18	Cage Hole Rails (Set of 2), 18U
RARWT18	12-24 Tapped Rails (Set of 2), 18U

25U	Item Number	Max. Rail Depth
	RWCHW25	20.00"

25U Dimensions: 46.44" x 23.69" x 23.50"

25U Related Optional Accessories	
Item Number	Description
*RAVFNT2	Top Mount Double Fan, 150 CFM
RADVS25	Vented Steel Door, 25U
RADSS25	Solid Steel Door, 25U
RARWC25	Cage Hole Rails (Set of 2), 25U
RARWT25	12-24 Tapped Rails (Set of 2), 25U

\*RAVFNT2 is not specific to any one size cabinet.

## SOHO / Remote Office Cabinets

Vericom® SOHO / Remote Office Cabinets are specifically designed for small offices and remote locations where space is a premium. Fully assembled and ready to deploy, they include all the features of a full-size server cabinet, conveniently sized to fit under or on top of a desk or counter. With a maximum rail depth of 29.5", these cabinets are capable of storing servers, networking switches, and a variety of other security and AV equipment, while high-flow vented doors provide passive cooling to keep equipment from overheating.



Side panels are lockable and removable for easy access to equipment

Removable top panel for installation of optional fan unit



Vented front and rear doors swing open to 180 degrees and are lockable, removable and reversible



Top and bottom equipped with vents and cable access panels



Mounting rails, complete with 10-32 tapped holes and easy to read RU markings



Doors equipped with quick release hinge pins and ground wire

### Specifications

Front and Rear Door	Removable, Reversible & Lockable High Flow Vented Steel, Opens Full 180°
Side Panels	Solid, Full Height, Removable and Lockable
Top Panel	(1) Removable Vented Panel For Optional Fan Unit (2) Removable Cable Entry Slots Located at Front and Back
Bottom Panel	(5) 2.75" Wide Individually Removable Covers (Maximum 11" x 15" Opening) (2) Removable Cable Entry Slots Located at Front and Back
Equipment Support	Two Pairs of Mounting Rails 1.75" RU Spacing, Marked and Numbered on Rails 19" W, EIA-310-D Universal Hole Spacing 10-32 Threaded Holes
Grounding	14 AWG Ground Wire Connects Doors and Side Panels to Cabinet Frame
Finish	Black Powder Coat
Static Loading Capacity	1,500 lbs.
Included Accessories	(48) 10-32 Mounting Screws (4) Adjustable Leveling Feet (4) Casters (4) Grounding Kits
Compliance	ANSI/EIA RS-310D IEC60297-2 DIN41494; Part 1 DIN41494; Part 7



## SOHO / Remote Office Cabinets

### Benefits

#### Security & Protection

- Locking doors and side panels prevent unauthorized access to equipment
- Two sets of rails provide a stable mounting structure
- Doors and side panels are grounded to the cabinet frame

#### Flexibility

- Includes both casters and adjustable leveling feet for both fixed and mobile installations
- Multiple cable entry options provide greater flexibility during installation
- Mounting rails are adjustable in  $\frac{3}{4}$ " depth increments to match a variety of equipment sizes
- Front door, rear door and side panels are all removable for convenient access to equipment

#### High Capacity

- Available in three heights to fit in a variety of environments where space is limited
- Deeper than a wall cabinet - 29.5" maximum rail depth can handle servers and other large equipment
- Robust design can support 1,500 lbs. of equipment

#### Key Features

- Sized to fit under a desk or counter
- Server depth
- High-flow vented doors
- Locking doors and side panels

### Ordering Information

8U	Item Number	Max. Rail Depth
	RSH0808	29.50"

8U Dimensions: 22.00" x 23.63" x 31.50"

8U Related Optional Accessories	
Item Number	Description
*RAFNQ04	Top Mount Quad Fan
*RATSS01	Solid Top Panel Insert
RARSC08	Cage Hole Rails, 8U (4 Pk)

12U	Item Number	Max. Rail Depth
	RSH0812	29.50"

12U Dimensions: 29.00" x 23.63" x 31.50"

12U Related Optional Accessories	
Item Number	Description
*RAFNQ04	Top Mount Quad Fan
*RATSS01	Solid Top Panel Insert
RARSC12	Cage Hole Rails, 12U (4 Pk)

24U	Item Number	Max. Rail Depth
	RSH0824	29.50"

24U Dimensions: 50.00" x 23.63" x 31.50"

24U Related Optional Accessories	
Item Number	Description
*RAFNQ04	Top Mount Quad Fan
*RATSS01	Solid Top Panel Insert
RARSC24	Cage Hole Rails, 24U (4 Pk)

\***RAFNQ04** fits in multiple cabinets and is not specific to any one size cabinet. **RATSS01** is applicable to 8U, 12U and 24U SOHO Cabinets.

*Additional accessories available.  
For a complete list, visit [vericomsolutions.com](http://vericomsolutions.com)*

## AV Cabinets

Vericom® AV Cabinets are designed for flexibility and security, making them a great choice for a multitude of audio and video applications. Fully assembled and ready to perform out-of-the-box, they are equipped with pre-installed shelving, blank panels, and tapped 10-32 mounting rails. Casters and adjustable leveling feet are provided for maximum mobility and sturdy placement.



### Specifications

Front Door	Removable, Reversible & Lockable Tempered Glass, Opens Full 180°
Side Panels	Solid, Full Height, Removable
Top Panel	(1) Solid Knockout & (1) Vented Knockout for Possibility of (2) Optional Double Fan Units [Maximum of 4 Total Fans] (1) Removable Cable Entry Slot
Bottom Panel	(1) Solid Knockout & (1) Vented Knockout for Possibility of (2) Optional Double Fan Units [Maximum of 4 Total Fans] (1) Removable Cable Entry Slot
Rear Panel	¾ Height Solid, Removable Panel ¾ Height Removable Cable Entry Slot
Equipment Support	Two Pairs of Mounting Rails Adjustable Depth Rails (16.25" - 22") 1.75" RU Spacing, Marked and Numbered on Rails 19" W, EIA-310-D Universal Hole Spacing 10-32 Threaded Holes
Grounding	14 AWG Ground Wire Connects Door to Cabinet Frame
Finish	Black Powder Coat
Static Loading Capacity	Varies By Cabinet Size (See Chart)
Pre-Installed Accessories	Shelving, Blank Panels and Lacing Bars, Amount Varies By Cabinet (See Chart)
Included Accessories	(16) 10-32 Mounting Screws (4) Adjustable Leveling Feet (4) Casters (1) Grounding Kit Shelf Straps (Quantity Varies) Shelf Backstops (Quantity Varies)
Compliance	ANSI/EIA RS-310D IEC60297-2 DIN41494; Part 1 DIN41494; Part 7



Optional fan unit compatible with top or bottom panels for additional cooling



Straps and backstops help secure equipment in place



Rear, Top & Bottom equipped with removable cable access panels



Pre-installed shelves and blanking panels



Mounting rails, complete with 10-32 tapped holes and easy to read RU markings





### Benefits

#### Equipment Protection

- Welded frame of heavy gauge cold-rolled steel
- Locking front door and rear access panel limit unwanted access to equipment
- Shelf straps and backstops secure equipment to shelves

#### Flexibility

- Available in four standard sizes that can handle most any audio/video equipment configurations
- Includes both casters and adjustable leveling feet for both fixed and mobile installations
- Front door, side and rear panels are all removable for convenient access to equipment
- Vented top and bottom panels provide free air cooling, and are compatible with an optional fan unit when additional cooling is needed

#### Complete Solution

- Fully assembled with shelves and blanking panels pre-installed
- Easy to order - everything you need in one item number, no need for a complicated configuration tool

#### Key Features

- Two [2] pair of heavy-duty, EIA- compliant 19" mounting rails, complete with 10-32 tapped holes and RU markings
- Removable, reversible, and lockable tempered-glass front door which opens a full 180°
- Cable entry slots with removable covers on top, back and bottom
- Top panel includes a provision for two [2] optional double fan units (maximum of four [4] total fans)

### Ordering Information

15U	Item Number	Max. Rail Depth	Static Load Capacity
	RAVCB15	22.00"	500 lbs.

15U Dimensions: 33.50" x 23.60" x 23.60"

15U Pre-Installed Accessories						
Lacing Bars	Shelves			Blanking Panels		
	1U	2U	3U	1U	2U	3U
1	1	1	1	1	1	1

27U	Item Number	Max. Rail Depth	Static Load Capacity
	RAVCB27	22.00"	750 lbs.

27U Dimensions: 51.20" x 23.60" x 23.60"

27U Pre-Installed Accessories						
Lacing Bars	Shelves			Blanking Panels		
	1U	2U	3U	1U	2U	3U
2	2	2	2	1	1	1

36U	Item Number	Max. Rail Depth	Static Load Capacity
	RAVCB36	22.00"	850 lbs.

36U Dimensions: 70.00" x 23.60" x 23.60"

36U Pre-Installed Accessories						
Lacing Bars	Shelves			Blanking Panels		
	1U	2U	3U	1U	2U	3U
3	2	3	3	2	2	2

44U	Item Number	Max. Rail Depth	Static Load Capacity
	RAVCB44	22.00"	1,000 lbs.

44U Dimensions: 81.00" x 23.60" x 23.60"

44U Pre-Installed Accessories						
Lacing Bars	Shelves			Blanking Panels		
	1U	2U	3U	1U	2U	3U
3	2	4	3	2	3	2

Additional accessories available.  
For a complete list, visit [vericomsolutions.com](http://vericomsolutions.com)

## Server Cabinets

Vericom® Server Cabinets are designed and built to U.S. industry standards and provide a customizable solution for data center build-outs, network rooms, or IT closets. The feature-rich, robust design can be shipped flat packed or as a custom-configured solution that is fully assembled with Vericom accessories pre-installed.

Available as an open frame or complete enclosure in eleven size combinations, two colors (classic black and frosty white), and 5 available door options, Vericom cabinets offer a variety of options and features to meet your specific needs.



### Specifications

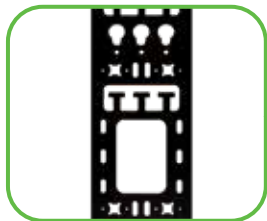
Standard Configuration Front Door	Removable, Reversible & Lockable Mesh, Opens Full 180°, 2 Point Latch Quick Release Hinges
Standard Configuration Rear Door	Removable, Reversible & Lockable Split Mesh Doors, Opens Full 180°, 3 Point Latch Quick Release Hinges
Side Panels	Half Height, Removable (2 Per Side)
Top Panel	10.5" x 13.5" Removable Vented Panel for Optional Fans (2) 3.5" x 18" Brush Cable Managers
Bottom Panel	(2) 4" x 15" Sliding / Removable Panels (2) 10" x 15" Sliding / Removable Panels
Equipment Support	(2 Pair) 14 Gauge Mounting Rails 1.75" RU Spacing, Marked and Numbered on Rails 19" W, EIA-310-D Universal Hole Spacing
Grounding	14 AWG Ground Wire Connects Doors and Side Panels to Cabinet Frame
Finish	Black or White Powder Coat
Static Loading Capacity	3,000 lbs.
Included Accessories	(4) Adjustable Leveling Feet (4) Casters (8) Grounding Kits (2) Lacing Channels (50) Sets of M6 Screws & Cage Nuts (2) Keys
Compliance	ANSI/EIA RS-310D IEC60297-2 DIN41494; Part 1 DIN41494; Part 7



Removable and lockable half-height side panels



Cable access with air containment on top and bottom of cabinets



Vertical zero-U PDU lacing panels pre-installed in rear corners for easy cable management



Standard configuration offers split mesh rear doors



Square cage holes in standard EIA-310-D hole spacing and RU markings



Quick release lift off hinges



## Server Cabinets

## Benefits

## Security &amp; Protection

- Locking doors and side panels prevent unauthorized access to equipment
- Two pairs of adjustable 19" EIA rails provide a stable mounting structure

## Flexibility

- Vertical zero-U PDU lacing panel pre-installed in rear corners for PDU mounting and easy cable management
- Rails and lacing panels can be easily repositioned in labeled, 1 cm increments to accommodate various equipment depths
- Removable and lockable half height side panels
- Doors hinge on either side and swing open 180° to provide superior access for installation and maintenance of equipment

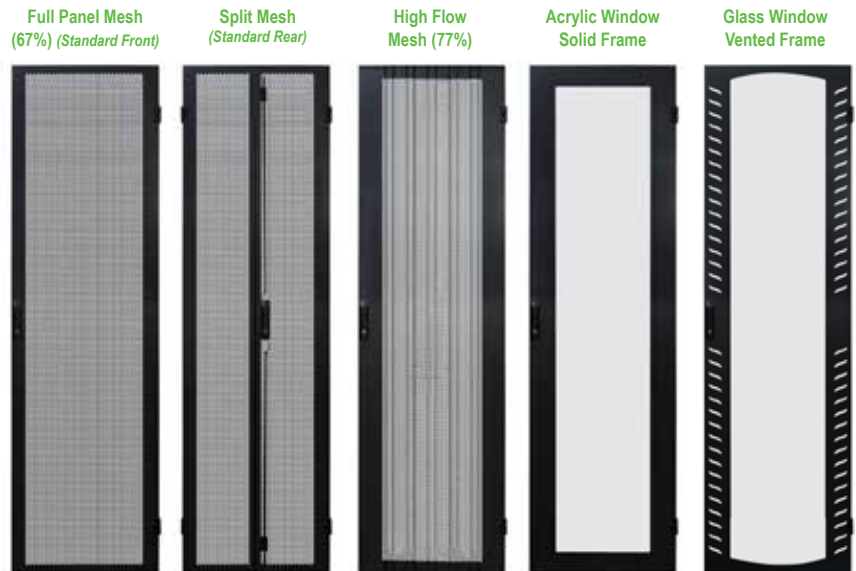
## Multi-Use

- Available in eleven size combinations to fit in a variety of environments
- Adaptable for use in data center build outs, computer rooms or data closets

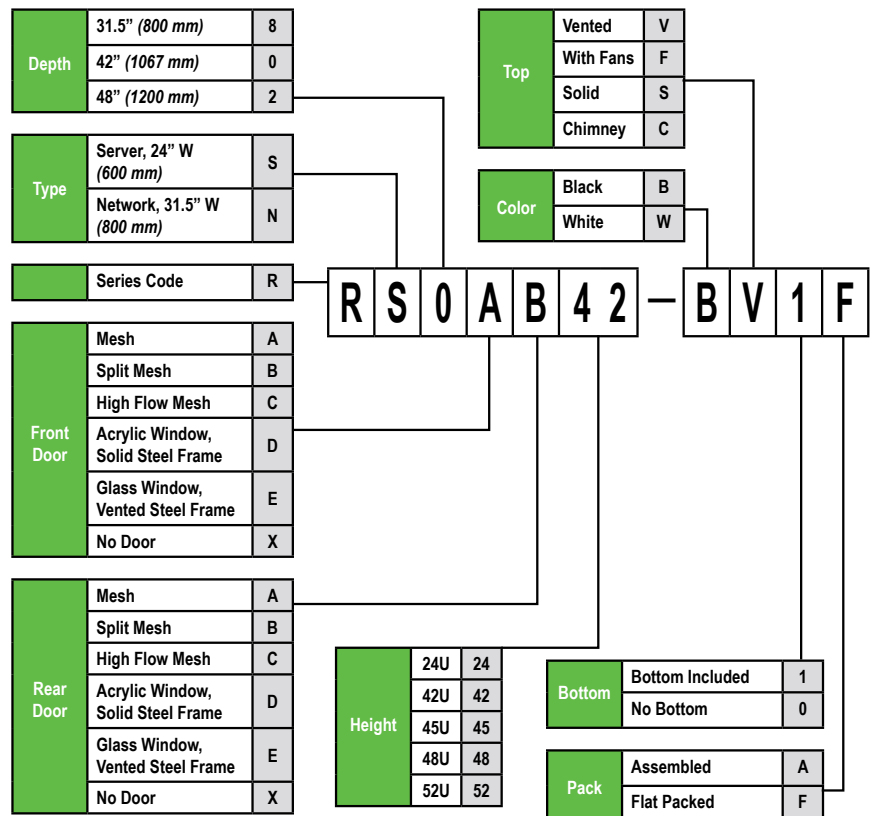
## Key Features

- Pre-installed recessed casters combine convenient mobility with minimal added height to provide additional stability
- Brush cable entry slots at front and back of top panel and sliding panels on bottom
- 3,000 lbs. static load capacity
- Colors: Classic Black or Frosty White
- Ships fully assembled and can be configured with accessories to match your individual specifications

## Cabinet Door Options



## Item Number Configuration



## Network Cabinets

Vericom® Network Cabinets are designed and built to U.S. industry standards and provide a customizable solution for data center build-outs, network rooms, or IT closets. The feature-rich, robust design can be shipped flat packed or as a custom-configured solution that is fully assembled with Vericom accessories pre-installed.

At 31.5" wide, Vericom Network Cabinets provide the additional space necessary for high density cabling installations and include two vertical cable troughs as standard equipment. Available as an open frame or complete enclosure in eight size combinations, two colors (classic black and frosty white), and 5 available door options, Vericom cabinets offer a variety of options and features to meet your specific needs.



### Specifications

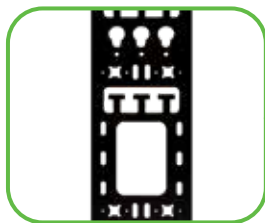
Standard Configuration Front Door	Removable, Reversible & Lockable Mesh, Opens Full 180°, 2 Point Latch Quick Release Hinges
Standard Configuration Rear Door	Removable, Reversible & Lockable Split Mesh Doors, Opens Full 180°, 3 Point Latch Quick Release Hinges
Side Panels	Half Height, Removable (2 Per Side)
Top Panel	10.5" x 13.5" Removable Vented Panel for Optional Fans (4) 3.5" x 18" Brush Cable Managers
Bottom Panel	(2) 4" x 15" Sliding / Removable Panels
	(2) 10" x 15" Sliding / Removable Panels
	(2) 3.5" x 18" Brush Cable Managers
Equipment Support	(2 Pair) 14 Gauge Mounting Rails
	1.75" RU Spacing, Marked and Numbered on Rails
Grounding	19" W, EIA-310-D Universal Hole Spacing 14 AWG Ground Wire Connects Doors and Side Panels to Cabinet Frame
Finish	Black or White Powder Coat
Static Loading Capacity	3,000 lbs.
Included Accessories	(4) Adjustable Leveling Feet
	(4) Casters (8) Grounding Kits (2) Lacing Channels (50) Sets of M6 Screws & Cage Nuts (2) Keys
Compliance	ANSI/EIA RS-310D IEC60297-2 DIN41494; Part 1 DIN41494; Part 7



Removable and lockable half-height side panels



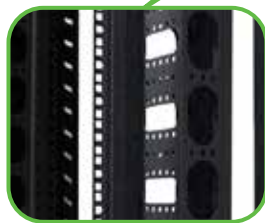
Multiple cable access points with air containment on top of cabinets



Vertical zero-U PDU lacing panels pre-installed in rear corners for easy cable management



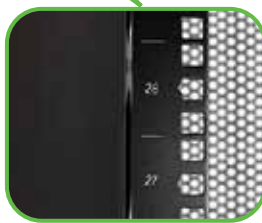
Mounting rails can be installed to accommodate 23" wide equipment to be installed



Pre-installed cable troughs on front cabinet rails



Brush cable managers in floor of cabinet



Square cage holes in standard EIA-310-D hole spacing and RU markings



## Network Cabinets

### Benefits

#### Security & Protection

- Locking doors and side panels prevent unauthorized access to equipment
- Two pairs of adjustable 19" EIA rails provide a stable mounting structure

#### Flexibility

- Vertical zero-U PDU lacing panels pre-installed on to rear corners for PDU mounting and easy cable management
- Rails and lacing panels can be easily repositioned in labeled, 1 cm increments to accommodate various equipment depths
- Removable and lockable half height side panels
- Doors hinge on either side and swing open 180° to provide superior access for installation and maintenance of equipment

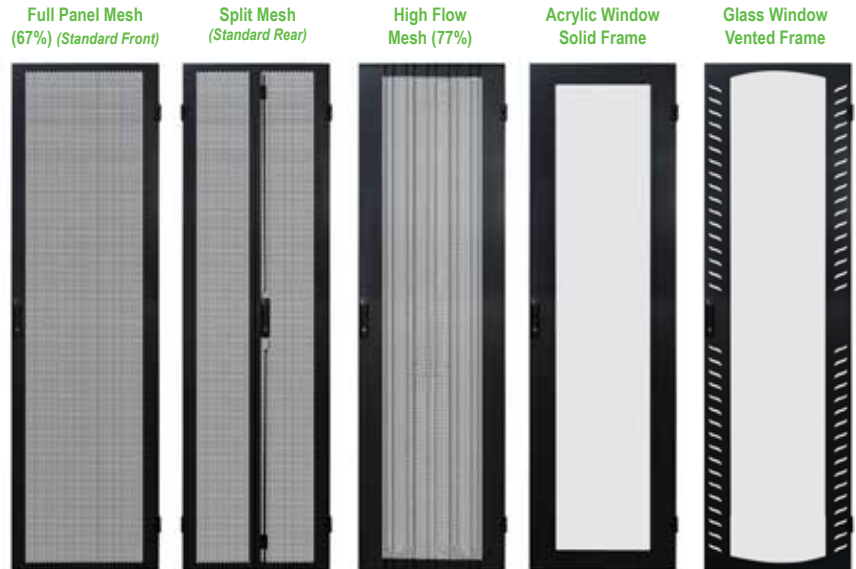
#### Multi-Use

- Available in eight size combinations to fit in a variety of environments
- Adaptable for use in data center build outs, computer rooms or data closets

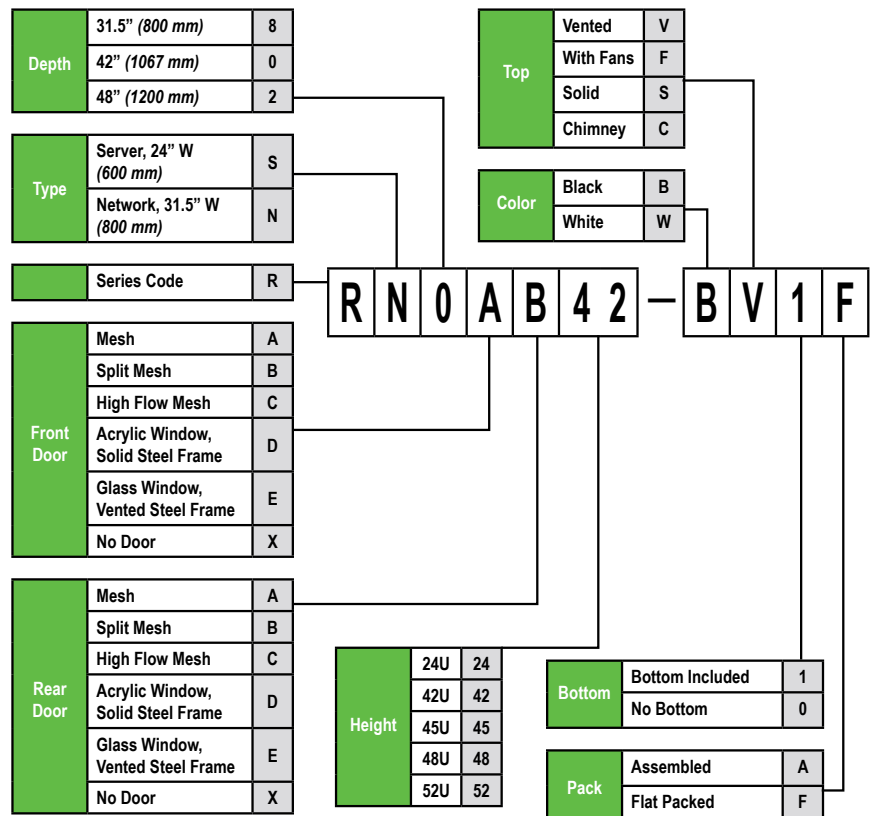
#### Key Features

- Vertical cable troughs pre-installed on front rails
- Pre-installed recessed casters combine convenient mobility with minimal added height to provide additional stability
- 3,000 lbs. static load capacity
- Colors: Classic Black or Frosty White
- Ships fully assembled and can be configured with accessories to match your individual specifications
- Mounting rails can be installed at our facility or easily modified by our customers after delivery to accept 23" wide network components

### Cabinet Door Options



### Item Number Configuration





## Airflow Management

### Ordering Information

Fans & Filters		
Item #	RU	Description
RAFNH01	1U	Horizontal Rack Mount Quad Fan, 300 CFM; Compatibility: Standard 19" Width Cabinets
RAFNQ04	N/A	Top Mount Quad Fan, 300 CFM; Compatibility: Standard 19" Width Cabinets
RAVFNT2	3U	Top Mount Double Fan, 150 CFM; Compatibility: AV Cabinets, High Density Wall Mount Cabinets
RAFND02	N/A	Double Fan, 150 CFM; Compatibility: Wall Mount Cabinets
RAFNS01	N/A	Single Fan, 75 CFM ; Compatibility: Wall Mount Cabinets
RAFLT04	N/A	Filter Kit; Compatibility: 75 CFM Fans
Blanking Panels		
RABPSS1 RABPSS2 RABPSS3 RABPSS4	1U 2U 3U 4U	Solid Steel Blanking Panel; Compatibility: All Racks & Cabinets
RABPST1 RABPST2	1U 2U	Toolless Steel Blanking Panel; Compatibility: Racks & Cabinets With Cage Holes
RABPSV1 RABPSV2 RABPSV3 RABPSV4	1U 2U 3U 4U	Vented Steel Blanking Panel; Compatibility: All Racks & Cabinets

\* Not all available items listed are pictured. For more information contact your Vericom Representative.

Horizontal Rack Mount  
Quad Fan, 300 CFM



Top Mount Quad Fan, 300 CFM



Double Fan, 150 CFM



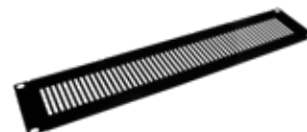
Top Mount Double Fan, 150 CFM



Solid Steel Blanking Panels



Vented Steel Blanking Panels



## Cable Management

### Ordering Information

Cable Managers		
Item #	RU	Description
RAMS4D1	1U	Horizontal D-Ring Cable Manager (4 Rings, Steel)
RAMSFD1	1U	Horizontal Finger Duct Cable Manager (Steel)
RAMSBR1	1U	Brush Cable Manager
RAMS5D1 RAMS5D2	1U 2U	Horizontal D-Ring Cable Manager (Steel)
RAMP5D1 RAMP5D2	1U 2U	Horizontal D-Ring Cable Manager (Plastic)
RAMPFD1 RAMPFD2	1U 2U	Horizontal Finger Duct Cable Manager (Plastic)
RAMDFD2	2U	Horizontal Double Finger Duct Cable Manager (Plastic)
RAMSRG1-5	1U	Steel Ring Cable Manager (Pack of 5)
RAMPRG1	N/A	Snap-In Cable Management Ring
RAMVT18	18U	Vertical Trough Cable Manager, 2pc Set (18U Per Pc) Use for Open Racks
RAMVT42 RAMVT45 RAMVT48 RAMVT52	42U 45U 48U 52U	Vertical Trough Cable Manager
RAMVF42 RAMVF45 RAMVF48 RAMVF52	42U 45U 48U 52U	Vertical Finger Duct Cable Manager

\* Not all available items listed are pictured. For more information contact your Vericom Representative.

Horizontal D-Ring Cable Manager  
(5 Rings, Plastic)



Brush Cable Manager



Vertical Trough Cable Manager,  
18U (Set of 2)



Horizontal Finger Duct Cable  
Manager (Plastic)



Steel Ring Cable Manager  
(Pack of 5)



## Shelves & Drawers

Adjustable Depth  
Wall Cabinet Shelf



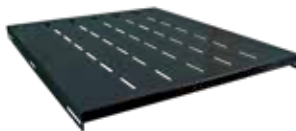
Double Sided  
Center Mount Rack Shelf



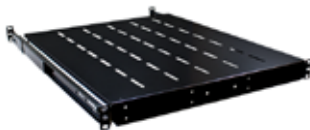
Cantilever Shelf



Fixed Shelf



22" Sliding Shelf



Locking Drawer



### Ordering Information

Shelves		
Item #	RU	Description
RASA231	1U	Adjustable Depth Wall Cabinet Shelf
RASC122	2U	12" Cantilever Shelf
RASC142	2U	14" Cantilever Shelf
RASC162	2U	16" Cantilever Shelf
RASF211	1U	21.5" Fixed Shelf
RASF281	1U	28.5" Fixed Shelf
RASS221	1U	22" Sliding Shelf
RASDS02	2U	Double Sided Center Mount Rack Shelf
Drawers		
Item #	RU	Description
RADRW02 RADRW03	2U 3U	Locking Drawer

\* Not all available items are listed. For more information contact your Vericom Representative.

Free Rolling Caster



Locking Caster



Adjustable Leveler



## Casters & Levelers

### Ordering Information

Casters & Levelers		
Item #	Size	Description
RACAS20 RACAS25	2" 2.5"	Free Rolling Caster, 2 Pack
RACAL20 RACAL25	2" 2.5"	Locking Caster, 2 Pack
RALVL04	N/A	Adjustable Leveler, 4 Pack

10-32 Screws - 50 pc.



10-32 Cage Nuts - 50 pc.



Extra Cabinet Keys



## Hardware

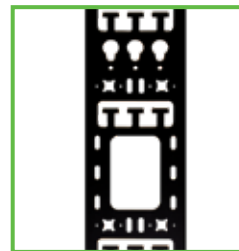
### Ordering Information

Hardware	
Item #	Description
RAKEY01	Extra Cabinet Keys
RAS3250	10-32 Screws, 50 pc.
RAC3250	10-32 Cage Nuts, 50 pc.
RAGAN04	Ganging Clips for Server & Network Cabinets, 4 Pack
RAHCL01	Cabinet Door Handle With Combo Lock
RARGKWC	Rubber Grommet Kit for Wall Cabinets, 6 pc.
RARGKHD	Rubber Grommet Kit for High Density Wall Cabinets, 6 pc.

## Server & Network Cabinet Accessories

### Ordering Information

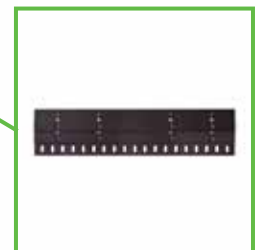
Server & Network Cabinet Doors		
Item #	RU	Description
DB624A DB642A DB645A DB648A DB652A	24U 42U 45U 48U 52U	Vented Steel Door, 24" (600 mm) width (67%)
DB624B DB642B DB645B DB648B DB652B	24U 42U 45U 48U 52U	Split Vented Steel Door, 24" (600 mm) width
DB624C DB642C DB645C DB648C DB652C	24U 42U 45U 48U 52U	High Flow Vented Steel Door, 24" (600 mm) width (77%)
DB642D DB645D	42U 45U	Acrylic With Vented Steel Frame, 24" (600 mm) width
DB642E DB645E	42U 45U	Glass With Vented Steel Frame, 24" (600 mm) width
DB842A DB845A DB848A DB852A	42U 45U 48U 52U	Vented Steel Door, 31.5" (800 mm) width (67%)
DB842B DB845B DB848B DB852B	42U 45U 48U 52U	Split Vented Steel Door, 31.5" (800 mm) width
DB842C DB845C DB848C DB852C	42U 45U 48U 52U	High Flow Vented Steel Door, 31.5" (800 mm) width (77%)
DB842D DB845D	42U 45U	Acrylic With Vented Steel Frame, 31.5" (800 mm) width
DB842E DB845E	42U 45U	Glass With Vented Steel Frame, 31.5" (800 mm) width
Lacing Panels		
Item #	RU	Description
FB425P FB455P FB485P FB525P	42U 45U 48U 52U	Zero U PDU Lacing Panel, 5" width
Air Dam Kits		
Item #	RU	Description
RAAD842 RAAD845 RAAD848 RAAD852	42U 45U 48U 52U	Air Dam Kit With Brush Pass-Through
RAFA842 RAFA845 RAFA848 RAFA852	42U 45U 48U 52U	Air Dam Kit With Plastic Fingers & Brush Pass-Through



Zero U PDU Lacing Panel, 5" Width



Air Dam With Plastic Fingers & Brush Pass-Through



Additional accessories available.  
For a complete list, visit [vericomsolutions.com](http://vericomsolutions.com)

\* Not all available items listed are pictured. For more information contact your Vericom Representative.

Lacing Bar



Shelf Straps



Ganging Clip for AV Cabinets



## AV Cabinet & Rack Accessories

### Ordering Information

AV Cabinet & Rack Shelves		
Item #	RU	Description
RAVCS01	1U	18" Cantilever Shelf
RAVCS02	2U	
RAVCS03	3U	
AV Cabinet & Rack Miscellaneous Accessories		
Item #	RU	Description
RAVTB02	N/A	Lacing Bar, 2 Pack
RAVBS10	N/A	Shelf Backstop, 10 Pack
RAVSS10	N/A	Shelf Strap, 10 Pack
RAVLK01	N/A	Panel Lock
RAVGC04	N/A	Ganging Clip For AV Cabinets, 4 Pack

\* Not all available items listed are pictured. For more information contact your Vericom Representative.

Power Distribution Unit



LED Cabinet Light



## Power Distribution & Cabinet Lighting

### Ordering Information

PDU's	
Item #	Description
RAPDUH1	Power Distribution Unit, 10+2 Horizontal
Cabinet Lighting	
Item #	Description
RALED01	LED Cabinet Light; 4W, 400 Lumens

**NOTE:** For a list of High Density Wall Cabinet Accessories please visit page #21.  
For a list of SOHO Cabinet Accessories please visit page #23.

## Patch Panels

### Ordering Information

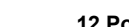
12 Port Wall Mount Patch Panels		
Item #	RU	Description
MPP5U-03854	N/A	CAT5e U/UTP Wall Mount 12 Port Mini Patch Panel
MPP6U-03855	N/A	CAT6 U/UTP Wall Mount 12 Port Mini Patch Panel
12 Port Punch Down Patch Panels		
Item #	RU	Description
MPP5U-03856	1U	CAT5e U/UTP 12 Port Punch Down Patch Panel
MPP6U-03857	1U	CAT6 U/UTP 12 Port Punch Down Patch Panel
24 Port Keystone Pass-Through Patch Panels		
Item #	RU	Description
MPP5U-01359	1U	CAT5e U/UTP 24 Port Keystone Pass-Through Patch Panel
MPP6U-01363	1U	CAT6 U/UTP 24 Port Keystone Pass-Through Patch Panel
24 Port Punch Down Patch Panels		
Item #	RU	Description
MPP5U-01354	1U	CAT5e U/UTP 24 Port Punch Down Patch Panel
MPP6U-01361	1U	CAT6 U/UTP 24 Port Punch Down Patch Panel
24 Port Shielded Punch Down Patch Panels		
Item #	RU	Description
MPP5S-01360	1U	CAT5e U/UTP 24 Port Shielded Punch Down Patch Panel
MPP6S-01364	1U	CAT6 U/UTP 24 Port Shielded Punch Down Patch Panel
Universal 24 Port Blank Keystone Patch Panels		
Item #	RU	Description
MPPKU-04040	1U	Universal 24 Port Unshielded Blank Keystone Patch Panel
MPPKS-04042	1U	Universal 24 Port Shielded Blank Keystone Patch Panel
48 Port Punch Down Patch Panels		
Item #	RU	Description
MPP5U-01355	2U	CAT5e U/UTP 48 Port Punch Down Patch Panel
MPP6U-01362	2U	CAT6 U/UTP 48 Port Punch Down Patch Panel

\* Not all available items listed are pictured. For more information contact your Vericom Representative.

**Blank Patch Panels applicable to CAT5e & CAT6  
Keystones. Additional accessories available.  
For a complete list, visit [vericomsolutions.com](http://vericomsolutions.com)**



12 Port Wall Mount Patch Panel



12 Port Punch Down Patch Panel



24 Port Keystone Pass-Through Patch Panel



24 Port Punch Down Patch Panel



24 Port Shielded Punch Down Patch Panel



48 Port Punch Down Patch Panel



24 Port Blank Keystone Patch Panel



24 Port Shielded Blank Keystone Patch Panel





1 Port Keystone Faceplate



3 Port Keystone Faceplate



Unshielded Keystone Jack



Shielded Keystone Jack



Unshielded Keystone Coupler



Shielded Keystone Coupler



HDMI Keystone Coupler



Blank Keystone Insert



Blank Hex Keystone Insert



F-81 Keystone Insert



## Keystone Plates & Inserts

### Ordering Information

Standard Keystone Faceplates			
Type	Ivory	Light Almond	White
1 Port	XFPOP-03588	XFPOP-01452	XFPOP-00470
2 Port	XFPOP-03589	XFPOP-01453	XFPOP-00471
3 Port	XFPOP-03590	XFPOP-01454	XFPOP-00472
4 Port	XFPOP-03419	XFPOP-03420	XFPOP-03418
6 Port	XFPOP-03422	XFPOP-03423	XFPOP-03421
Unshielded Keystone Jacks			
CAT3 RJ14	CAT5e RJ45	CAT6 RJ45	Color
N/A	MKJ5U-02408	MKJ6U-03720	Black
N/A	MKJ5U-02409	MKJ6U-02415	Blue
N/A	MKJ5U-02410	MKJ6U-02416	Green
MKJ3U-04058	MKJ5U-02411	MKJ6U-02417	Ivory
MKJ3U-04057	MKJ5U-02412	MKJ6U-02418	Light Almond
N/A	MKJ5U-02413	MKJ6U-02419	Orange
MKJ3U-03571	MKJ5U-03719	MKJ6U-02420	White
N/A	MKJ5U-02414	MKJ6U-02421	Yellow
Shielded Keystone Jacks			
CAT5e		CAT6	CAT6a
MKJ5S-04495		MKJ6S-04496	MKJ6S-04497
Unshielded RJ45 Keystone Couplers			
CAT5e		CAT6	Color
MKJ5U-01349		MKJ6U-01352	Black
MKJ5U-03669		MKJ6U-03670	White
Shielded RJ45 Keystone Couplers			
CAT5e		CAT6	
MKJ5S-04685		N/A	
Specialty Keystone Inserts			
Type	Ivory	Light Almond	White
HDMI	XHDAC-01426	N/A	XHDAC-01424
Blank (10 pc.)	XFPTP-03609	N/A	XFPTP-00504
Blank Hex (10 pc.)	N/A	N/A	XPAC-01432
F-81 (1 pc.)	MKJ81-03435	MKJ81-03436	MKJ81-03434

\* Not all available items listed are pictured. For more information contact your Vericom Representative.

## Connectors

### Ordering Information

RJ45 Boots & Connectors		
Item #	Color	Description
WRJ45-03439	Clear	CAT5e RJ45 Clear Connectors - 50 pc.
WRJ45-03441	Clear & Metallic	CAT5e RJ45 Shielded Connectors - 50 pc.
WRJ45-03440	Clear	CAT6 RJ45 Clear Connectors - 50 pc.
WRJ45-03442	Clear & Metallic	CAT6 RJ45 Shielded Connectors - 50 pc.
WRJ45-04469	Clear	CAT6a / CAT7 RJ45 Clear Connectors - 50 pc.
WRJ45-04468	Clear & Metallic	CAT6a / CAT7 RJ45 Shielded Connectors - 50 pc.
MCP6S-04683	Black & Blue	CAT6 RJ45 Shielded Female Waterproof Coupler
WRJBT-03781 WRJBT-03782 WRJBT-03783 WRJBT-03784 WRJBT-03785 WRJBT-03787 WRJBT-03786	Black Blue Gray Green Red White Yellow	RJ45 Snagless Boots - 50 pc. (Per Color)
RJ14 Connectors		
Item #	Color	Description
WRJ14-04492	Clear	RJ14 Connectors - 50 pc.
BNC Connectors		
Item #	Color	Description
WBBNC-03561	Metallic	BNC Barrel Connectors - 50 pc.
WBNCX-03712	Metallic	RG59/6 BNC Hex Crimp Connector, 2-piece set
F-Type Connectors		
Item #	Color	Description
WTW6D-03445	Metallic	RG6 Dual Shield Twist-On Connectors - 100 pc.
WCR6D-03444	Metallic	RG6 Dual Shield Hex Crimp Connectors - 100 pc.
WCR6Q-03443	Metallic	RG6 Quad Shield Hex Crimp Connectors - 100 pc.
PV1666	Metallic & Blk / Grn Band	RG6 Universal Compression Connectors - 50 pc.
WBF81-03562	Metallic & White	F-81 Barrel Connectors - 50 pc.
BRF81-03653	Metallic & Blue	F-81 High Frequency Barrel Connectors
WBF81-03812	Metallic	F-81 Barrel Connector Hex Nut
BRWSR-04865	Black	Weather Sealing Rings - 100 pc.
BRWBT-04551	Black	F Connector Weather Booth Sleeve- 100 pc.
Audio Connectors		
Item #	Color	Description
XBPST-04848	GP / 1 Blk Band / 1 Red Band	Gold Plated Banana Plugs - Set of 2
Splice & Beanie Connectors		
Item #	Color	Description
WCRSL-04552	Red & White	UR2 Splice Connector - Box of 100
WBCGF-04742	Blue	Gel-Filled Beanie Wire Connectors - 100 pc.
WBCNG-04743	White	Dry Beanie Wire Connectors - 100 pc.

\* Not all available items listed are pictured. For more information contact your Vericom Representative.

#### Unshielded RJ45 Connectors



#### Shielded RJ45 Connectors



#### RG6 Dual Shield Twist-On Connectors



#### RG6 Universal Compression F-Connectors



#### High-Frequency F-81 Barrel Connectors



#### BNC Barrel Connectors



#### CAT6 Outdoor Shielded Waterproof Coupler



#### F-Connector Weather Boot Sleeve



#### UR2 Splice Connector



#### Beanie Wire Connector With Gel



## Installation Tools

**Modular Plug  
Crimping Tool**



**Deluxe 66/110  
Punch Down Tool**



**CAT6a / CAT7 Ratcheting  
Modular Plug Crimping Tool**



**8-Way Coax Cable Mapper**



**Coax Stripping Tool**



**Universal Coax  
Compression Tool**



**Ratcheting Coax  
Compression Tool**



**Pocket Toner**



**LED Head Lamp**



**LED Work Light**



### Ordering Information

66/110 Punchdown Tools		
Item #	Color	Description
WTPDT-03633	Blue	Deluxe 66/110 Punch Down Tool
Crimping Tools		
Item #	Color	Description
WTRJC-03632	Blue	Modular Plug Crimping Tool
WTRJC-05008	Blue	CAT6a / CAT7 Modular Plug Crimping Tool
WTCXC-03634	**Varies	Coax Hex Crimping Tool
Coax Mapper Tools		
Item #	Color	Description
BRCXM-03638	Blue	8-Way Coax Cable Mapper
Coax Stripping Tools		
Item #	Color	Description
WTCXS-03631	Gray	Coax Stripping Tool
Compression Tools		
Item #	Color	Description
WTCXP-03629	**Varies	Universal Coax Compression Tool
WTCXP-03630	Blue	Ratcheting Coax Compression Tool
Pocket Toner		
Item #	Color	Description
BRCXT-03639	Blue	Pocket Toner
Rechargeable LED Lighting		
Item #	Color	Description
SLDHL-04593	Blk & Wht	Rechargeable Lithium-Ion Headlamp
SLDWL-04591	Ylw & Blk	Rechargeable Lithium-Ion Work Light

\*\*Color varies based on stock availability.

\* Not all available items listed are pictured. For more information contact your Vericom Representative.

## Wire Management

### Ordering Information

Hook & Loop Ties		
Item #	Length	Description
XACCM-00541	6"	Hook & Loop Ties - Bag of 10
XACCM-00852	8"	
XACCM-00853	12"	
Zip Ties		
Item #	Length	Description
XACCM-03850	6"	50 lb. Zip Ties - Bag of 100
XACCM-03851	11"	
XACCM-03859	14"	
Bridging Clips, Cable Clips & Siding Clips		
Item #	Color	Description
T66BC-04849	Metallic	IDC Bridging Clips - Bag of 10
WCMNC-03654	Black	Single RG6 Cable Clip With Masonry Nail - Bag of 100
WCMNC-03664	White	
WCMNC-03655	Black	Dual RG6 Cable Clip With Masonry Nail - Bag of 100
WCMNC-03665	White	
WCMSC-03656	Black	Single Flexible Cable Clip With Screw - Bag of 100
WCMSC-03840	White	
WCMSC-03657	Black	Dual Flexible Cable Clip With Screw - Bag of 100
WCMSC-03841	White	
XACCM-04412	Clear	Horizontal Siding Clip - Bag of 100
XACCM-04401	Clear	Vertical Siding Clips - Bag of 100
Feed Thru Bushings		
Item #	Color	Description
XACCM-01419	Black	Single Feed Thru Bushing - Bag of 100
XACCM-01420	Clear	
XACCM-04242	White	
XACCM-01421	Black	Dual Feed Thru Bushing - Bag of 100
Electrical Tape		
Item #	Color	Description
ELCTP-04793	Black	3/4" Professional Grade Electrical Tape Single Unit - 66 ft. Roll
ELCTP-04788	Black	3/4" Commercial Grade Electrical Tape Single Unit - 66 ft. Roll
Telco 66 Punchdown Block & Mounting Bracket		
Item #	Color	Description
T66PB-04270	White / Clear	Telco 66 Punch Down Block With Clear Protective Cover - Sold Individually
T66FR-04271	White	Telco 66 Punch Down Block Mounting Stand-Off Bracket - Sold Individually

\* Not all available items listed are pictured. For more information contact your Vericom Representative.

Hook & Loop Ties



50 lb. Zip Ties



Cable Clips With Masonry Nails



Flexible Cable Clips With Screws



Horizontal Siding Clips



Vertical Siding Clips



Professional Grade Electrical Tape



Commercial Grade Electrical Tape



Single Feed Thru Bushings



Dual Feed Thru Bushings







When partnering with Vericom, customers unlock the support of a global team of industry experts. Our emphasis is on quality, reliability, compatibility and standards-compliant products. With distribution in more than 30 countries, Vericom takes an end-to-end infrastructure and connectivity solutions approach to meet the customer needs in the industries served.

## Industry Compliance

Built to meet or surpass industry standards for quality and performance, compliance is a top priority. With a history of meeting the challenges industry professionals face, Vericom is the relationship of choice for those customers in the pursuit of innovation.



## Partnership Programs

There are many benefits to participating in Vericom's Partnership Programs. In addition to being one of a very select group, you can offer warranties to customers and complete both industry and Vericom specific product trainings. Our programs are specifically designed to reward installers who have made a commitment to use quality products from Vericom.



## Custom Configuration & Delivery Options

For customers that know the specifications of their installation, Vericom can easily incorporate accessories or help to outfit a custom solution to meet those requirements. Vericom has flexibility to offer customizable shipping options, such as flat-pack I.T. enclosures that can be built onsite when space is a premium. When special delivery services are required, Vericom can provide a complete list of service options for review.







**Vericom Global Solutions**

10025 Investment Drive, Suite 120

Knoxville, TN 37932

[www.vericomsolutions.com](http://www.vericomsolutions.com)

twitter: @\_VERICOM\_

865.671.4455

Although Vericom makes every effort to ensure their accuracy at the time of this publication, information, images and specifications herein are subject to error or omission and to change without notice, and the listing of such information and specifications does not ensure product availability.