



Racks, Cabinets, & Infrastructure



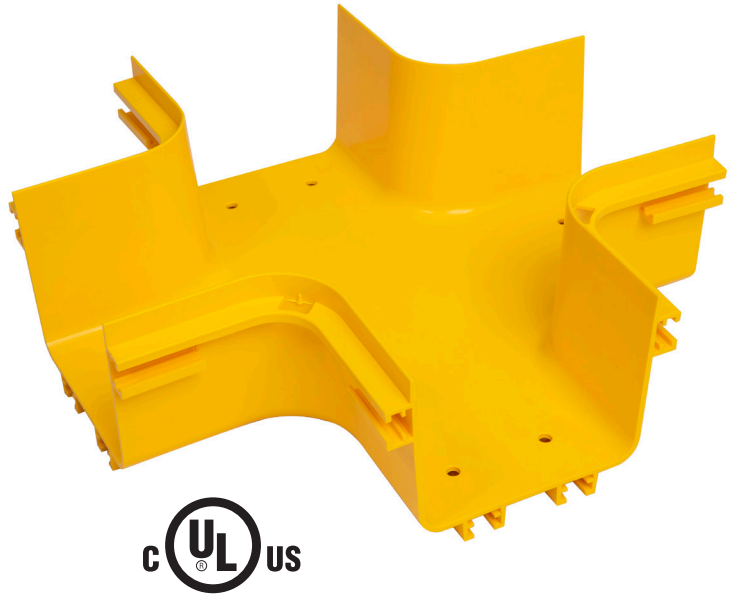
Fiber Cable Tray

© 2021 Vericom Global Solutions

info@vericomsolutions.com • vericomsolutions.com

Introduction

Vericom's Fiber Cable Tray System is a comprehensive raceway solution for data center, enterprise, central office, and mobile switching center applications. Designed to route and protect fiber optic and high-performance copper cabling to and from network cabinets, distribution frames, and other terminal devices, our system includes an extensive portfolio of channels, transitional fittings, drops, and support structures that provide the flexibility and configurability to fit any installation environment. And with tool-free assembly of all channel sections and transitional fittings, the Vericom Fiber Cable Tray System reduces installation and maintenance time, which in turn reduces the total cost of ownership.



KEY FEATURES:

- Available in 5", 10", and 15" channel widths
- Minimum 2" bend radius maintained throughout the system to prevent excessive cable bends that result in signal loss
- All plastic components are made from lightweight UL 94 V-0 flame rated material
- Conforms to UL 2024 Cable Routing Assemblies and Communications Raceways (E515097)
- Tool-free design makes assembly and installation fast and easy

Straight Channel



Description

Straight channel sections support and carry cables horizontally throughout a fiber cable routing system. Available in 6.5ft lengths, channels can be cut to size and connected to additional straight sections or transitional fittings such as elbows, tees, and crosses.

Features

- Tool-free installation
- Lightweight, flame-retardant PVC (V-0 rated)
- Requires couplers for connection (sold separately)

Item Number	Description	Dimensions (L x W x H)	Availability
VCT-120SCP	5"W x 4"D x 6.5'L Straight Channel	6.5' x 6.2" x 4.6"	Stocked
VCT-240SCP	10"W x 4"D x 6.5'L Straight Channel	6.5' x 10.9" x 4.6"	Special Order
VCT-360SCP	15"W x 4"D x 6.5'L Straight Channel	6.5' x 15.6" x 4.6"	Special Order
VCT-120SCPC	Cover for 5"W x 4"D x 6.5'L Straight Channel	6.5' x 6.1" x 0.5"	Stocked
VCT-240SCPC	Cover for 10"W x 4"D x 6.5'L Straight Channel	6.5' x 10.9" x 0.5"	Special Order
VCT-360SCPC	Cover for 15"W x 4"D x 6.5'L Straight Channel	6.5' x 15.6" x 0.5"	Special Order

Horizontal 90° Elbow



Description

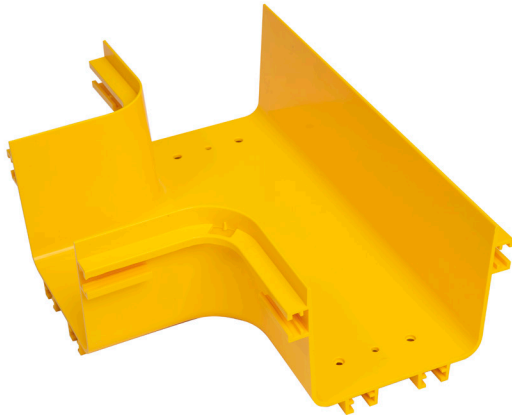
Connects to a straight channel section or other transitional fittings to provide a 90-degree horizontal bend in a fiber routing system.

Features

- Maintains minimum cable bend radius requirements
- Tool-free installation
- Lightweight, flame-retardant PVC (V-0 rated)
- Requires couplers for connection (sold separately)

Item Number	Description	Dimensions (L x W x H)	Availability
VCT-120HE91	5" Horizontal 90° Elbow	10.1" x 10.1" x 4.6"	Stocked
VCT-240HE91	10" Horizontal 90° Elbow	14.9" x 14.9" x 4.6"	Special Order
VCT-360HE91	15" Horizontal 90° Elbow	19.4" x 19.4" x 4.6"	Special Order
VCT-120HE91C	Cover for 5" Horizontal 90° Elbow	10.1" x 10.1" x 0.5"	Stocked
VCT-240HE91C	Cover for 10" Horizontal 90° Elbow	14.9" x 14.9" x 0.5"	Special Order
VCT-360HE91C	Cover for 15" Horizontal 90° Elbow	19.4" x 19.4" x 0.5"	Special Order

Horizontal Tee



Description

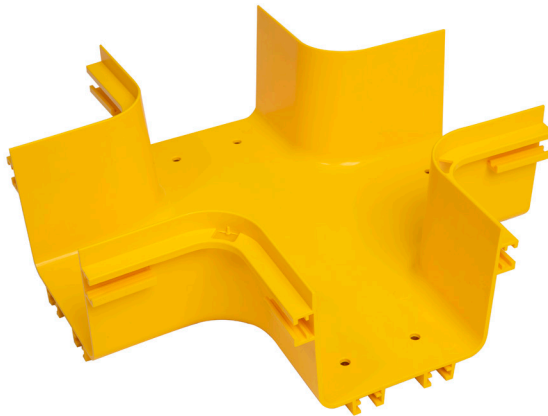
Horizontal tees connect to three straight channel sections or other transitional fittings to create a horizontal branch in a fiber routing system.

Features

- Maintains minimum cable bend radius requirements
- Tool-free installation
- Lightweight, flame-retardant PVC (V-0 rated)
- Requires couplers for connection (sold separately)

Item Number	Description	Dimensions (L x W x H)	Availability
VCT-120HT1	5" Horizontal Tee	13.9" x 10.1" x 4.6"	Stocked
VCT-240HT1	10" Horizontal Tee	18.7" x 14.8" x 4.6"	Special Order
VCT-360HT1	15" Horizontal Tee	23.2" x 19.4" x 4.6"	Special Order
VCT-240AT	10" x 5" Horizontal Tee	14.7" x 13.8" x 4.6"	Special Order
VCT-120HT1C	Cover for 5" Horizontal Tee	13.9" x 10.1" x 0.5"	Stocked
VCT-240HT1C	Cover for 10" Horizontal Tee	18.7" x 14.8" x 0.5"	Special Order
VCT-360HT1C	Cover for 15" Horizontal Tee	23.2" x 19.4" x 0.5"	Special Order
VCT-240ATC	Cover for 10" x 5" Horizontal Tee	14.7" x 13.8" x 0.5"	Special Order

Horizontal Cross



Description

Horizontal crosses connect to four straight channel sections or other transitional fittings to create a four-way intersection with two exits in a fiber routing system.

Features

- Maintains minimum cable bend radius requirements
- Tool-free installation
- Lightweight, flame-retardant PVC (V-0 rated)
- Requires couplers for connection (sold separately)

Item Number	Description	Dimensions (L x W x H)	Availability
VCT-120HC1	5" Horizontal Cross	13.9" x 13.9" x 4.6"	Stocked
VCT-240HC1	10" Horizontal Cross	18.7" x 18.7" x 4.6"	Special Order
VCT-360HC1	15" Horizontal Cross	23.2" x 23.2" x 4.6"	Special Order
VCT-240AC	10" x 5" Horizontal Cross	18.7" x 14" x 4.6"	Special Order
VCT-120HC1C	Cover for 5" Horizontal Cross	13.9" x 13.9" x 0.5"	Stocked
VCT-240HC1C	Cover for 10" Horizontal Cross	18.7" x 18.7" x 0.5"	Special Order
VCT-360HC1C	Cover for 15" Horizontal Cross	23.2" x 23.2" x 0.5"	Special Order
VCT-240ACC	Cover for 10" x 5" Horizontal Cross	18.7" x 14" x 0.5"	Special Order

45° Up Elbow



Description

Connects to a straight channel section to create a 45-degree upward angle from a horizontal run. Use with a 45-degree down elbow to change the elevation of a fiber routing system.

Features

- Maintains minimum cable bend radius requirements
- Tool-free installation
- Lightweight, flame-retardant PVC (V-0 rated)
- Requires couplers for connection (sold separately)

Item Number	Description	Dimensions (L x W x H)	Availability
VCT-120UE41	5" 45° Up Elbow	8.2" x 6.1" x 6.6"	Stocked
VCT-240UE41	10" 45° Up Elbow	8.2" x 10.9" x 6.6"	Special Order
VCT-360UE41	15" 45° Up Elbow	8.1" x 15.6" x 6.6"	Special Order
VCT-120UE41C	Cover for 5" 45° Up Elbow	TBD	Stocked
VCT-240UE41C	Cover for 10" 45° Up Elbow	TBD	Special Order
VCT-360UE41C	Cover for 15" 45° Up Elbow	TBD	Special Order

45° Down Elbow



Description

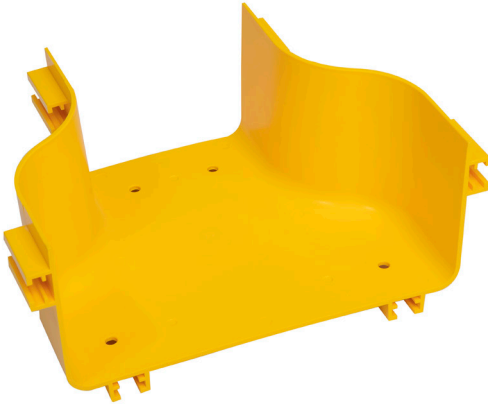
Connects to a straight channel section to create a 45-degree downward angle from a horizontal run. Use with a 45-degree up elbow to change the elevation of a fiber routing system.

Features

- Maintains minimum cable bend radius requirements
- Tool-free installation
- Lightweight, flame-retardant PVC (V-0 rated)
- Requires couplers for connection (sold separately)

Item Number	Description	Dimensions (L x W x H)	Availability
VCT-120DE41	5" 45° Down Elbow	7.6" x 6.4" x 6.4"	Stocked
VCT-240DE41	10" 45° Down Elbow	7.4" x 10.9" x 6.3"	Special Order
VCT-360DE41	15" 45° Down Elbow	7.3" x 15.6" x 6.3"	Special Order
VCT-120DE41C	Cover for 5" 45° Down Elbow	TBD	Stocked
VCT-240DE41C	Cover for 10" 45° Down Elbow	TBD	Special Order
VCT-360DE41C	Cover for 15" 45° Down Elbow	TBD	Special Order

Reducer



Description

Reducers provide a transition from one tray width to another and can connect to straight channel sections or other transitional fittings.

Features

- Tool-free installation
- Lightweight, flame-retardant PVC (V-0 rated)
- Requires couplers for connection (sold separately)

Item Number	Description	Dimensions (L x W x H)	Availability
VCT-240AS	10" to 5" Reducer	10.6" x 8.1" x 4.6"	Special Order
VCT-360AS	15" to 10" Reducer	15.6" x 8.1" x 4.6"	Special Order

Coupler



Description

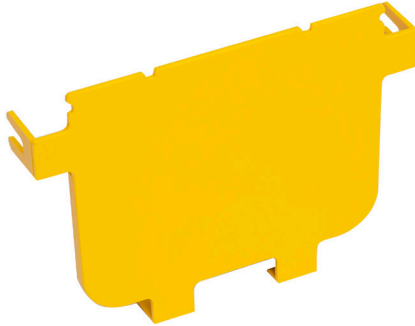
Couplers are used to quickly and easily connect straight channel sections and/or transitional fittings. Completely tool-free installation - simply hand-tighten the thumb screws to secure.

Features

- Tool-free installation
- Plastic thumb screws included (quantity varies by coupler size)
- Lightweight, flame-retardant PVC (V-0 rated)

Item Number	Description	Dimensions (L x W x H)	Availability
VCT-120CNC	5" Coupler	6.7" x 3.3" x 4.8"	Stocked
VCT-240CNC	10" Coupler	11.4" x 3.3" x 4.8"	Special Order
VCT-360CNA	15" Coupler	16.5" x 3.9" x 5.4"	Special Order

End Cap



Description

End caps close off terminal ends of a straight channel or transitional fitting to protect cables and provide a finished look.

Features

- Tool-free installation
- 4 sets of plastic t-bolts and hex nuts included
- Lightweight, flame-retardant PVC (V-0 rated)

Item Number	Description	Dimensions (L x W x H)	Availability
VCT-120EC	5" End Cap	5.9" x 4.5" x 1.0"	Stocked
VCT-240EC	10" End Cap	10.6" x 4.5" x 1.0"	Special Order
VCT-360EC	15" End Cap	15.3" x 4.5" x 1.0"	Special Order

Side Drop



*Coupler not included

Description

This Side Drop provides a vertical exit from a horizontal fiber tray run with connection to a 5" vertical channel. Tool-free installation allows this side drop to be located and/or repositioned anywhere along a straight channel section.

Features

- Maintains minimum cable bend radius requirements
- Tool-free installation
- Lightweight, flame-retardant PVC (V-0 rated)
- Includes 1 set of plastic T-bolts and hex nuts
- Snap-on cover included

Item Number	Description	Dimensions (L x W x H)	Availability
VCT-120SD	5"W Side Drop	10.3" x 10.2" x 5.9"	Stocked

Spill Over



Description

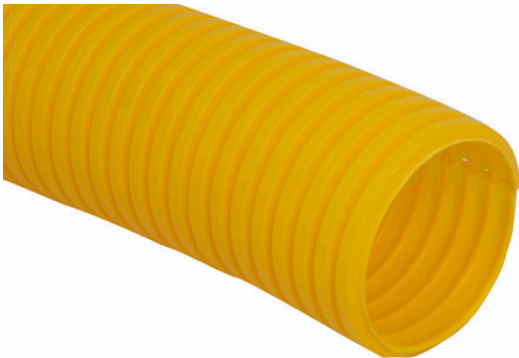
Side mounted spill overs provide a vertical exit from a horizontal fiber tray run, allowing cables to route into cabinets and racks below. Tool-free installation allows this spill over to be located and/or repositioned anywhere along a straight channel section.

Features

- Maintains minimum cable bend radius requirements
- Tool-free installation
- Lightweight, flame-retardant PVC (V-0 rated)
- Includes 1 set of plastic T-bolts and hex nuts
- Snap-on cover included

Item Number	Description	Dimensions (L x W x H)	Availability
VCT-090SD	3.5"W Spill Over	7.7" x 7.3" x 5.6"	Stocked
VCT-130SD	5"W Spill Over	8.8" x 7.5" x 5.5"	Stocked

Flexible Hose



Description

Use this Flexible Hose to protect cables throughout a vertical drop from an overhead fiber routing system into a cabinet or rack. The hose is corrugated to provide maximum flexibility and is split lengthwise for easy cable insertion or removal.

Features

- 10ft length can be cut to size
- Requires VCT-050U4 Hose Bracket and VCT-090SD or VCT-120SD Spill Over for installation (each sold separately)
- Tool-free installation
- Lightweight, flame-retardant PVC (V-0 rated)

Item Number	Description	Dimensions (L x W x H)	Availability
VCT-050H3	Flexible Hose 10ft	10' x 2.0" x 2.0"	Stocked

Hose Bracket



Description

Hose Brackets secure the Flexible Hose to the Spill Over in a vertical drop from an overhead fiber tray run to a cabinet or rack below.

Features

- Includes 4 brackets
- Requires VCT-050U4 Hose Bracket and VCT-090SD or VCT-120SD Spill Over for installation (each sold separately)
- Tool-free installation
- Lightweight, flame-retardant PVD (V-0 rated)

Item Number	Description	Dimensions (L x W x H)	Availability
VCT-050U4	Hose Bracket (4 pcs)	2.3" x 2.4" x 0.8"	Stocked

Trumpet



Description

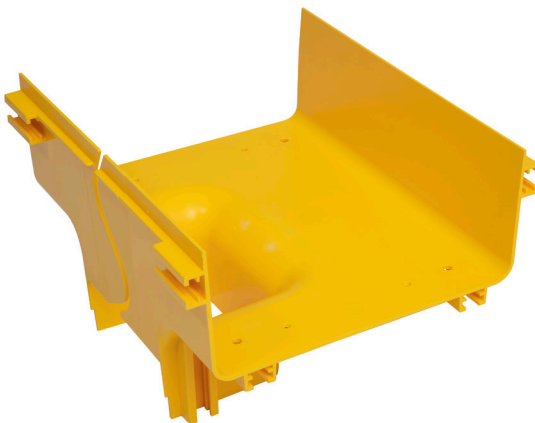
Trumpet spillouts are used to limit the bend radius of cables to 2" when exiting from a straight channel or other transitional fitting.

Features

- Tool-free installation
- 4 sets of plastic t-bolts and hex nuts included
- Lightweight, flame-retardant PVC (V-0 rated)

Item Number	Description	Dimensions (L x W x H)	Availability
VCT-120TS	5" Trumpet	7.0" x 4.9" x 2.8"	Stocked
VCT-240TS	10" Trumpet	12.7" x 5.4" x 2.2"	Special Order

Vertical Tee



Description

Vertical tees connect to straight channel sections or other transitional fittings to provide a 90-degree vertical drop in a fiber routing system.

Features

- Maintains minimum cable bend radius requirements
- Tool-free installation
- Lightweight, flame-retardant PVC (V-0 rated)
- Requires couplers for connection (sold separately)

Item Number	Description	Dimensions (L x W x H)	Availability
VCT-120VT1	5" Vertical Tee	11.8" x 7.8" x 7.1"	Special Order
VCT-240AV	10" to 5" Vertical Tee	11.8" x 10.9" x 7.5"	Special Order

Adapters



Description

These adapters allow Vericom's 5" wide Fiber Cable Tray system to quickly and easily connect to an existing Commscope® Flberguide® or Panduit® FiberRunner® raceway.

Features

- Built-in couplers on each end
- Includes all required installation hardware
- Tool-free installation
- Lightweight, flame-retardant PVC (V-0 rated)

Item Number	Description	Dimensions (L x W x H)	Availability
VCT-120AD100	Adapter to Commscope 4x4 Tray	6.6" x 4.0" x 4.8"	Stocked
VCT-120PD100	Adapter to Panduit 4x4 Tray	6.6" x 3.9" x 4.8"	Stocked
VCT-120PD150	Adapter to Panduit 4x6 Tray	7.9" x 3.9" x 4.8"	Stocked

Cable Tray to Ladder Support Bracket



Description

Suspend a fiber tray run from a ladder rack with this support kit. Position the bracket anywhere along a ladder stringer and secure with the included hardware.

NOTE: fiber cable tray should be supported at least every 6.5 ft and at every coupler location.

Features

- All required installation hardware included
- 8" threaded rod included (can be cut to size in the field)
- No drilling required

Item Number	Description	Dimensions (L x W x H)	Availability
VCT-120SSS	5" Cable Tray to Ladder Support Bracket	N/A	Stocked
VCT-240SSS	10" Cable Tray to Ladder Support Bracket	N/A	Special Order
VCT-360SSS	15" Cable Tray to Ladder Support Bracket	N/A	Special Order

Cabinet Standoff Kit



Description

Support a fiber tray run above a row of cabinets using this standoff kit. Support brackets can be positioned anywhere along a straight channel or transitional fitting.

NOTE: fiber cable tray should be supported at least every 6.5 ft and at every coupler location.

Features

- Assembly hardware included
- Drilling into cable tray not required
- Hardware for securing to cabinet not included

Item Number	Description	Dimensions (L x W x H)	Availability
VCT-120SO	Cabinet Standoff Kit for 5" Cable Tray	N/A	Stocked
VCT-240SO	Cabinet Standoff Kit for 10" Cable Tray	N/A	Special Order
VCT-360SO	Cabinet Standoff Kit for 15" Cable Tray	N/A	Special Order

Dual Level Cabinet Standoff



Description

Support both a 5" fiber cable tray and a wire basket tray with this single standoff support kit. Easily mounts to the floor or to the top of a cabinet.

Features

- Tool-free connection to fiber tray
- Fiber cable tray mounting height is adjustable

Item Number	Description	Dimensions (L x W x H)	Availability
VCT-350DSL	Dual Level Cabinet Standoff - 15"W x 20"H	17.5" x 5" x 20"	Stocked
VCT-500DSL	Dual Level Cabinet Standoff - 20"W x 20"H	22.5" x 5" x 20"	Stocked
VCT-750DSL	Dual Level Cabinet Standoff - 20"W x 30"H	22.5" x 5" x 30"	Stocked

Trapeze



Description

Suspend a fiber tray run from the ceiling with this trapeze support kit. Includes 2 pcs of threaded rod and all hardware required for installation.

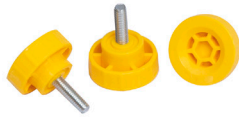
NOTE: fiber cable tray should be supported at least every 6.5 ft and at every coupler location.

Features

- Install at any location along a straight channel or transitional fitting
- Drilling into cable tray not required
- 2 pcs of M20 threaded rod included
- Includes all required hardware for installation

Item Number	Description	Dimensions (L x W x H)	Availability
VCT-120CS10	3' Trapeze for 5" Cable Tray	N/A	Stocked
VCT-120CS15	5' Trapeze for 5" Cable Tray	N/A	Stocked
VCT-120CS20	6.5' Trapeze for 5" Cable Tray	N/A	Stocked
VCT-120CS30	10' Trapeze for 5" Cable Tray	N/A	Stocked
VCT-240CS10	3' Trapeze for 10" Cable Tray	N/A	Special Order
VCT-240CS15	5' Trapeze for 10" Cable Tray	N/A	Special Order
VCT-240CS20	6.5' Trapeze for 10" Cable Tray	N/A	Special Order
VCT-240CS30	10' Trapeze for 10" Cable Tray	N/A	Special Order
VCT-360CS10	3' Trapeze for 15" Cable Tray	N/A	Special Order
VCT-360CS15	5' Trapeze for 15" Cable Tray	N/A	Special Order
VCT-360CS20	6.5' Trapeze for 15" Cable Tray	N/A	Special Order
VCT-360CS30	10' Trapeze for 15" Cable Tray	N/A	Special Order

Plastic Thumb Screw



Description

Bag of 50 thumb screws for fiber cable tray assembly

Item Number	Description	Dimensions (L x W x H)	Availability
VCT-HF01-B50	Plastic Thumb Screw	1.0" x 1.0" x 1.2"	Stocked

Plastic square nut



Description

Bag of 50 square nuts for fiber cable tray assembly

Item Number	Description	Dimensions (L x W x H)	Availability
VCT-HF02-B50	Plastic square nut	0.7" x 0.7" x 0.3"	Stocked

Plastic T-bolt



Description

Bag of 50 T-bolts for fiber cable tray assembly

Item Number	Description	Dimensions (L x W x H)	Availability
VCT-HF03-B50	Plastic T-bolt	0.8" x 0.4" x 1.0"	Stocked

Plastic Hex Nut



Description

Bag of 50 hex nuts for fiber cable tray assembly

Item Number	Description	Dimensions (L x W x H)	Availability
VCT-HF04-B50	Plastic Hex Nut	1.0" x 1.0" x 0.5"	Stocked



Vericom Global Solutions

10025 Investment Drive, Suite 120

Knoxville, TN 37932

www.vericomsolutions.com

sales@vericomsolutions.com

Phone: (865) 671-4455

Fax: (865) 671-4497