



Empty Fiber Keystone Adapter (Fits Copper Patch Panel and Faceplates)



Applications

These empty fiber keystone adapters are suitable for use with Vericom simplex SC adapters, duplex LC adapters, universal patch panels, and faceplates to create a fiber connection in a residential or commercial environment.

Description / Specifications

These empty fiber keystone adapters are used in conjunction with our simplex SC adapters and our duplex LC adapters to allow select fiber adapters to be used as snap-in fiber keystones for our Vericom universal patch panels and faceplates. These empty keystone adapters are packaged as a set of 10, and are available in white or black to suit your specific installation.

Ordering Information

Description

Empty Fiber Keystone Adapter (Fits Copper Patch Panel and Faceplates)- Bag of 10

Item No.	Color
UAT-KYST-BK-10	Black
UAT-KYST-WH-10	White

Features & Benefits

- For use with Vericom simplex SC adapters, or duplex LC adapters
- Fiber adapter simply slides into the empty keystone adapter
- Keystone snap-in design allows for quick, low cost installation
- Suitable for use with standard keystone patch panels and faceplates
- Material: PC (Polycarbonate)
- Color: Available in Black or White
- Packaging: Bag of 10

Standards Compliance

- RoHS Compliant

Related Products

SC Fiber Optic Simplex Adapters

**SC-UPC Single Mode, Blue, Item No. UAT11U11BL1*
SC-UPC Multi Mode OM1-OM2, Beige, Item No. UAT11U12BE1
SC-APC Single Mode, Green, Item No. UAT11A21GR1



LC Fiber Optic Duplex Adapters

**LC-UPC Single Mode, Blue, Item No. UAT22U21BL1*
LC-UPC Multi Mode OM1-OM2, Beige, Item No. UAT22U22BE1
LC-APC Single Mode, Green, Item No. UAT22A21GR1
LC-UPC Multi Mode OM3, Aqua, Item No. UAT22U22AQ1
LC-UPC Multi Mode OM4, Magenta, Item No. UAT22U22PU1



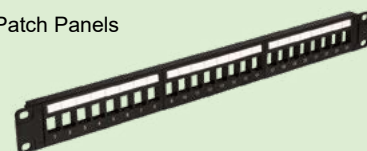
Single Gang Keystone Faceplate w/ Labels, White

**1 Port: Item No. FP2WH1VL*
2 Port: Item No. FP2WH2VL
3 Port: Item No. FP2WH3VL
4 Port: Item No. FP2WH4VL
6 Port: Item No. FP2WH6VL



VGS™ Universal Modular Patch Panels w/ Labels

**24 Port: Item No. UPP6001-24*
48 Port: Item No. UPP6001-48



TECHNICAL SHEETS ARE SUBJECT TO CHANGE WITHOUT NOTICE.

**Pictured*

REV.20250110.2