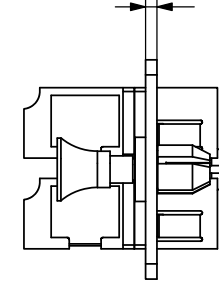
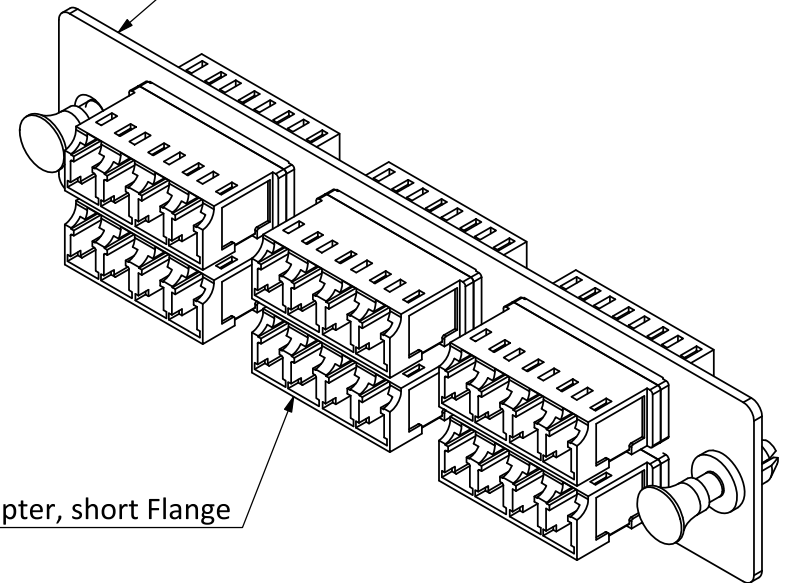


0.06" (1.50mm)



LGX Fiber Adapter Panel




LC Quad Adapter, short Flange

SPECIFICATIONS

1. Standard LGX Mounting footprint
2. Materials:
 - Panel: cold rolled steel
 - Snap-in Fasteners: Thermoplastic
 - Adapter Housing: PEI
 - Mating Sleeve: Ceramic
3. Panel Sheet Thickness: 18-gauge
4. Surface Finishing: Black powder-coated
5. Color Code of LC Adapters:
 - LC/UPC Singlemode: Blue

Attn: Dust Caps not shown on the drawing, but included.

APPROVED			
CHECKED			
DRAWING			
DATE	10/01/23	TITLE	LGX Fiber Adapter 24 Port w/ 6 LC SM Quad Adapters
UNLESS OTHERWISE SPECIFIED: DIMENSIONS SHOWN ARE IN [mm]		ITEM NO.	FOLC24F-6Q1