



## Top Mount Cable Management Trough



### Product Specifications

**Product Type:** Top Mount Cable Management Trough

**Material:** 18 Gauge Cold Rolled Steel

**Dimensions (HxWxD):** See Chart Below

**Hardware:** 6 pcs Self Drilling, Self-Tapping Screws Included

**Quantity Per Package:** Sold Individually

**Compliance:** RoHS

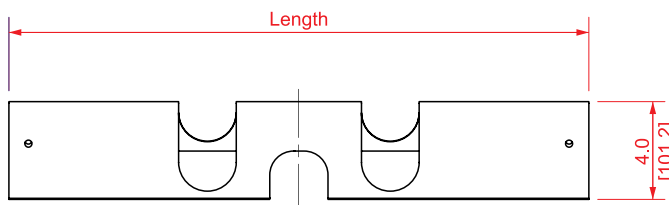
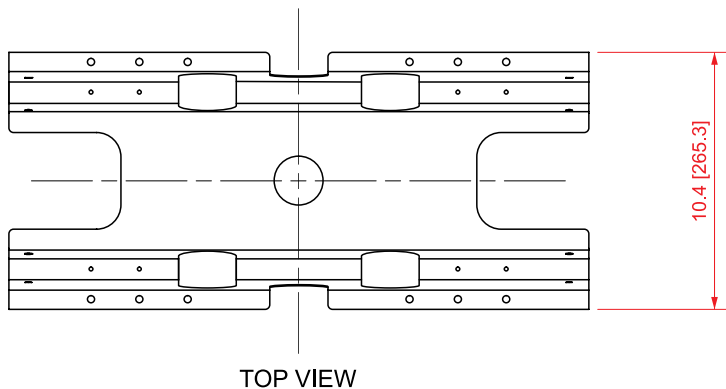
### Description

The Top Mount Cable Trough is a cost-effective solution for routing cables across the top of VC5 series network and server cabinets. When cabinets are aligned in a row configuration, these troughs provide a protected pathway for cables without the need for traditional overhead cable runway.

### Ordering Information

Item #	Dimensions	Compatibility
RACT600	23.6"L x 10.4"W x 4.0"H	24" / 600mm wide VC5 Cabinets
RACT800	31.5"L x 10.4"W x 4.0"H	31.5" / 800mm wide VC5 Cabinets

### Technical Drawing



TECHNICAL SHEETS ARE SUBJECT TO CHANGE WITHOUT NOTICE.

REV.20250110.2

