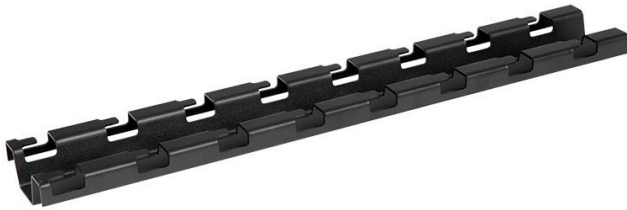




M-Type Cross Bar



Description

M-type cross bars provide additional strength when suspending high capacity basket tray from the ceiling. Installation is simple, with locking tabs securing trays from 4" (100mm) to 24" (600mm) wide to the cross bar without the use of screws or clamps. Compatible with threaded rod up to 3/8" diameter (not included).

Product Specifications

- Material:** High-strength carbon steel
- Finish:** Black powder coat
- Dimensions (W x H):** 2.5" x 0.8"
- Weight:** see table below
- Compliance & Standards:** IEC 61537
- Selling Unit:** 1 piece

ITEM NUMBER	DESCRIPTION	DIMENSIONS (L x W x H)	WEIGHT	AVAILABILITY
VBT-BM100-BP	M-Type Cross Bar for 4"W Tray	7.1" x 2.5" x 0.8"	0.42 lbs	Special order
VBT-BM200-BP	M-Type Cross Bar for 8"W Tray	11" x 2.5" x 0.8"	0.69 lbs	Special order
VBT-BM300-BP	M-Type Cross Bar for 12"W Tray	15" x 2.5" x 0.8"	0.99 lbs	Stocked
VBT-BM400-BP	M-Type Cross Bar for 16"W Tray	18.9" x 2.5" x 0.8"	1.29 lbs	Stocked
VBT-BM500-BP	M-Type Cross Bar for 20"W Tray	22.8" x 2.5" x 0.8"	1.59 lbs	Special order
VBT-BM600-BP	M-Type Cross Bar for 24"W Tray	26.8" x 2.5" x 0.8"	1.89 lbs	Special order

