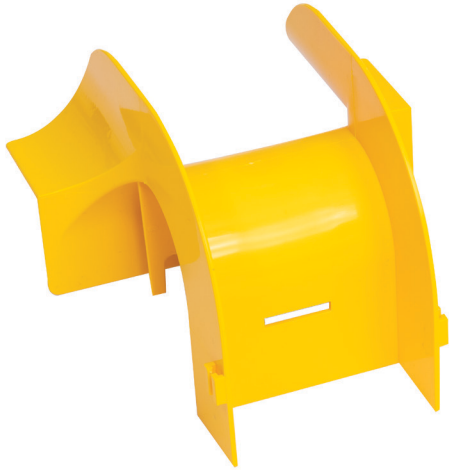




## 3.5" Wide Spill Over

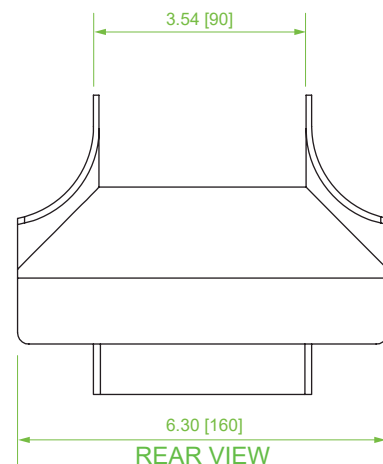
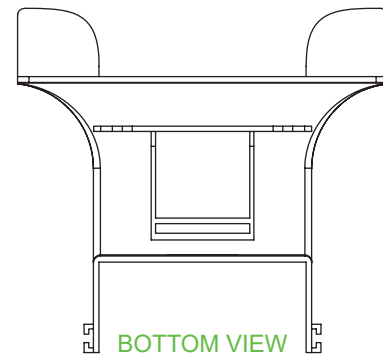
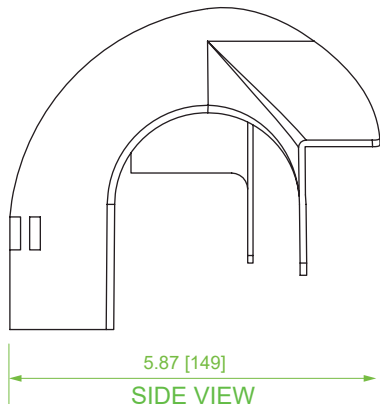


### Description

Side mounted spill overs provide a vertical exit from a horizontal fiber tray run, allowing cables to route into cabinets and racks below. Tool-free installation allows this spill over to be located and/or repositioned anywhere along a straight channel section.

- Maintains minimum cable bend radius requirements
- Tool-free installation

Item Number	Description
VCT-090SD	3.5"W Spill Over



TECHNICAL SHEETS ARE SUBJECT TO CHANGE WITHOUT NOTICE.

REV.20250213.1