



Side Drop



Description

This Side Drop provides a vertical exit from a horizontal fiber tray run with connection to a 5" vertical channel. Tool-free installation allows this side drop to be located and/or repositioned anywhere along a straight channel section.

- Tool-free installation
- Snap-on cover included
- Maintains minimum cable bend radius requirements

Product Specifications

Material: Lightweight, flame-retardant PVC (V-0 rated)

Color: Yellow

Dimensions (L x W x H): 10.3" x 10.2" x 5.9"

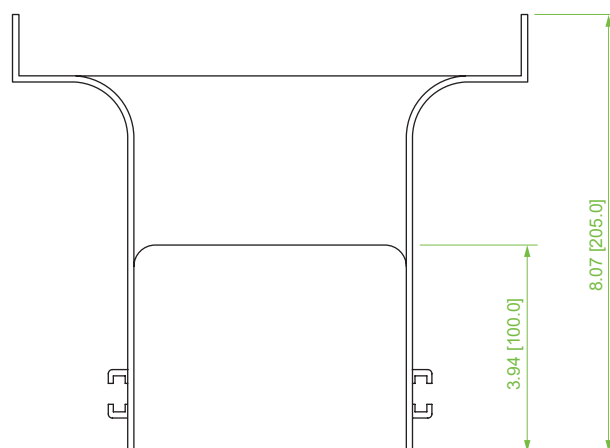
Weight: 1.6 lbs

Hardware: 2 sets of T-bolts & hex nuts (included)

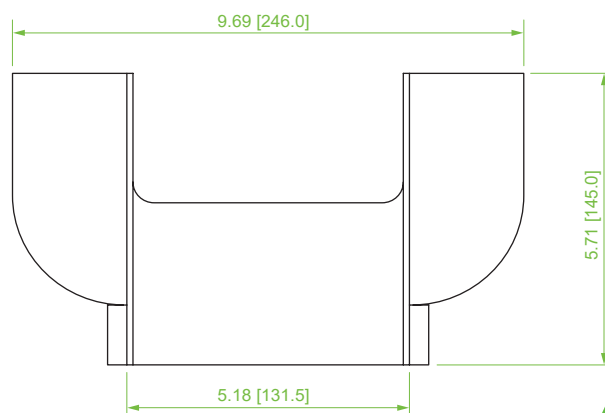
Compliance & Standards: UL2024 & UL94-V0

Selling Unit: 1 piece

Item Number	Description
VCT-120SD	5"W Side Drop



TOP VIEW



FRONT VIEW