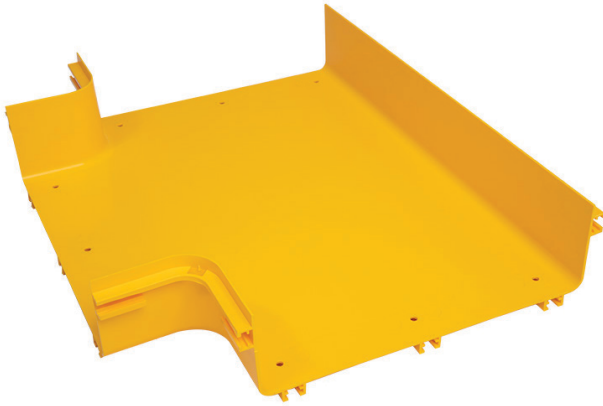




15" Horizontal Tee



Description

Horizontal tees connect to three straight channel sections or other transitional fittings to create a horizontal branch in a fiber routing system.

- Tool-free installation
- Maintains minimum cable bend radius requirements

Item Number	Description
VCT-360HT1	15" Horizontal Tee
VCT-360HT1C	Cover for 15" Horizontal Tee

Product Specifications

Material: Lightweight, flame-retardant PVC (V-0 rated)

Color: Yellow

Dimensions (L x W x H): 23.2" x 19.4" x 4.6"

Weight: 3.72 lbs

Hardware: (3) VCT-360CNC couplers for connection
(sold separately)

Compliance & Standards: UL2024 & UL94-V0

Selling Unit: 1 piece

