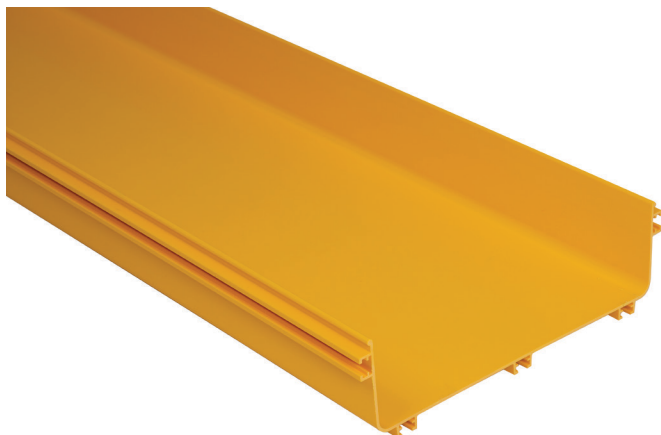




15" Straight Channel



Description

Straight channel sections support and carry cables horizontally throughout a fiber cable routing system. Available in 6.5ft lengths, channels can be cut to size and connected to additional straight sections or transitional fittings such as elbows, tees, and crosses.

- Tool-free installation

Product Specifications

Material: Lightweight, flame-retardant PVC (V-0 rated)

Color: Yellow

Dimensions (L x W x H): 6.5' x 15.6" x 4.6"

Weight: 19.4 lbs

Hardware: (2) VCT-360CNC couplers for connection
(sold separately)

Load Capacity: 53 lbs/ft

Compliance & Standards: UL2024 & UL94-V0

Selling Unit: 1 piece

Item Number	Description
VCT-360SCP	15" Straight Channel
VCT-360SCPC	Cover for 15" Straight Channel

