



Fixed Wall Mount Cabinets



Description

Vericom Fixed Wall Mount Cabinets are a perfect solution for a variety of networking, AV, and security installations. Compatible with all standard 19-inch EIA equipment, these cabinets are packed with features that make setting up and maintaining equipment a breeze, including a lockable, removable, and reversible front door, removable side panels, and a removable 12" x 12" rear panel for in-wall cable entry.

Constructed of cold rolled and powder-coated 19-gauge steel, these fixed wall mount cabinets have a maximum load capacity of 132 lbs and are available in 9U, 12U, and 15U configurations. Ships unassembled and flat packed for easy on-site handling.

Benefits

Security & Protection

- Locking door and side panels prevent unauthorized access to equipment
- Door and side panels are grounded to the cabinet frame

Flexibility

- Multiple cable entry options provide greater flexibility during installation
- Mounting rails are adjustable to match a variety of equipment sizes
- Front door and side panels are all removable for convenient access to equipment

High Capacity

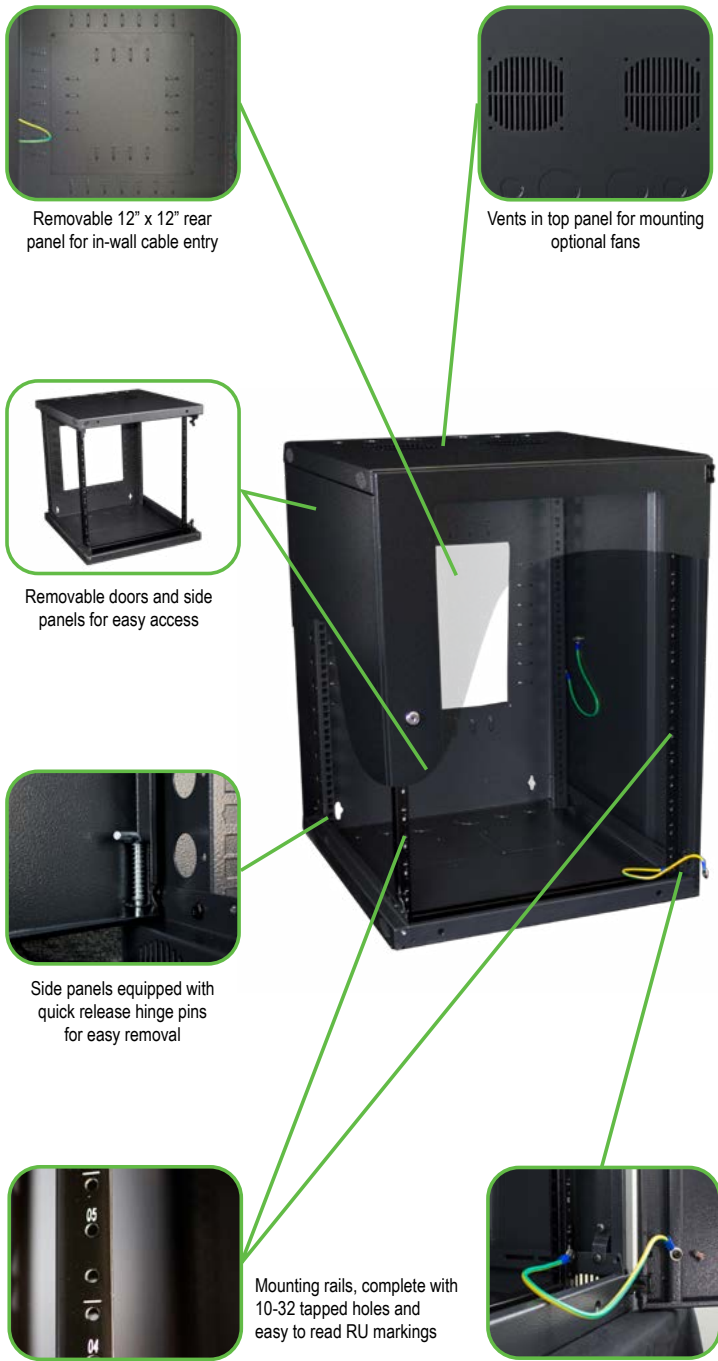
- Available in three sizes to fit in a variety of environments where space is limited
- Top and bottom panel vents to optimize cooling of equipment
- Adaptable for use in network, security and audio/visual installations

Key Features

- Cable entry on top, bottom and back
- Lace points to reduce cable clutter
- Lockable acrylic front door is removable and reversible
- Removable back panel and side panels



Fixed Wall Mount Cabinets



Removable 12" x 12" rear panel for in-wall cable entry

Vents in top panel for mounting optional fans

Removable doors and side panels for easy access

Side panels equipped with quick release hinge pins for easy removal

Mounting rails, complete with 10-32 tapped holes and easy to read RU markings

Front door and side panels equipped with ground wire

Product Specifications

Product Type: Fixed Wall Mount Cabinet

Frame Material: Heavy Gauge Cold Rolled Steel

Finish: Black Powder Coat

Dimensions (HxWxD): (Height Varies By Item #) x 21.25" x 23.62"

Rack Unit Quantity: 9U, 12U or 15U

Front Door: Removable, Reversible & Lockable Steel Frame With Full Panel Acrylic Window, Opens Full 180°

Rear Panel: 12" x 12" Removable Panel, Wall Mounting Keyholes Spaced 16" Apart, Multiple Lace Points

Side Panels: Solid, Full Height & Removable

Top Panel: Ventilation Holes For Optional Fan Unit, (6) Knock-Out Cable Entry Holes Located at Back: (2) 3/4", (2) 1" and (2) 2" Knock-Outs

Bottom Panel: Ventilation Holes For Optional Fan Unit, (6) Knock-Out Cable Entry Holes Located at Back: (2) 3/4", (2) 1" and (2) 2" Knock-Outs

Equipment Support: Adjustable Rail Depth (3.25"), 1.75" RU Spacing, Marked & Numbered On Rails; 19" W, EIA-310-D Universal Vertical Hole Spacing, 10-32 Threaded Holes

Grounding: 14 AWG Ground Wire Connects Doors & Side Panels To Cabinet Frame

Static Loading Capacity: 132 lbs.

Included Accessories: (48) 10-32 Mounting Screws & Washers, (1) Grounding Kit, (1) Paper Mounting Template, (2) Keys

Optional Accessories: RAMS5D1 (Horizontal D-Ring Cable Manager - 5 Rings, Steel, 1U), RAMPFD1 (Horizontal Finger Duct Cable Manager- Plastic, RASC122 (12" Cantilever Shelf, 2U), RASA231 (Adjustable Depth Wall Cabinet Shelf, 1U), RARGKWC (Rubber Grommet Kit for Fixed or Double Hinge Wall Mount Cabinets), RAFND02 (Double Fan, 150 CFM)

Compliance & Standards: RoHS, ANSI/EIA RS-310D, IEC60297-2, DIN41194; Part 1, DIN41494; Part 7

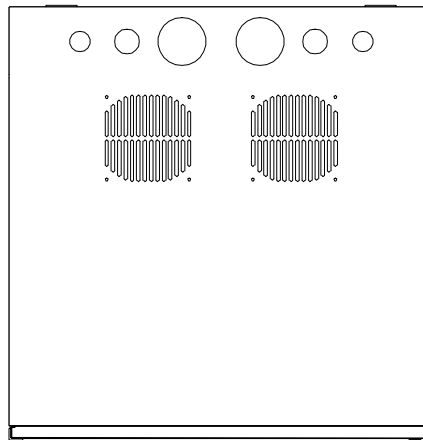


Fixed Wall Mount Cabinets

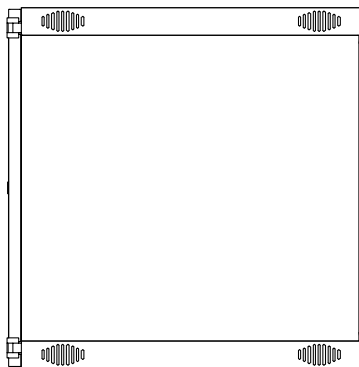
Ordering Information

Item SKU's	Rack Units	Height	Width	Depth
VW3-6091	9	18.11"	21.26"	23.57"
VW3-6121	12	23.35"	21.26"	23.57"
VW3-6151	15	28.60"	21.26"	23.57"

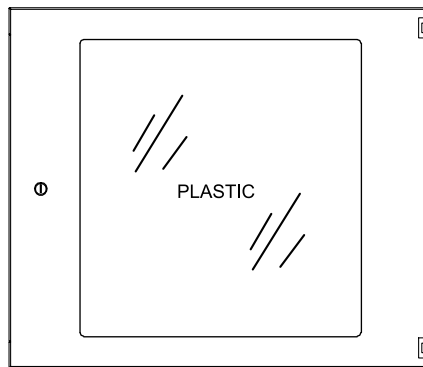
Technical Drawing



TOP



SIDE



FRONT

TECHNICAL SHEETS ARE SUBJECT TO CHANGE WITHOUT NOTICE.

REV.20250115.7